

Carrier Wales Delivers Uncontended Fibre to the Business with ZyXEL UK

Sector: ISP & Next Generation Networks (NGN)

Customer: Carrier Wales

Solution: ZyXEL Metro Switches

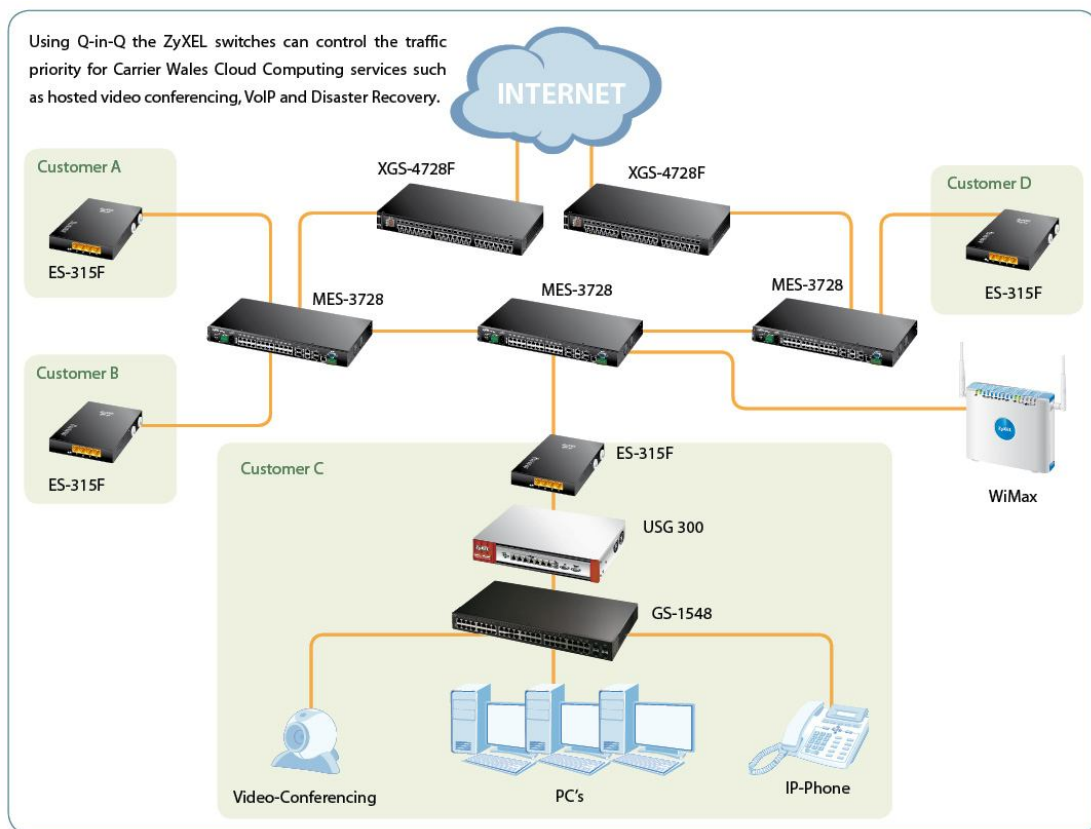
Summary:

By deploying ZyXEL Metro switches, Carrier Wales is now able to offer customers fibre to the business ‘uncontended’ connectivity with services from 10Mb to 1Gb. Using ZyXEL switches, Carrier Wales is able to interconnect with FibreSpeed, NTL/TeleWest, BT Openreach and other Next Generation Network (NGN) providers.

Challenge:

Critical to Carrier Wales was to partner with a vendor which could demonstrate a proven capability in comparable infrastructure roll-outs. Any hardware would need to be easily configurable and enable the segmentation of services from the core to the end-user and of course represent value for money.

Solution:





Business Benefits: Carrier Wales is now able to deliver uncontended connectivity speeds of between 10Mb to 1Gb which enables its customers to run multiple applications simultaneously. Crucially applications including VoIP, HD Video conferencing and Cloud storage can take place without any negative impact to each other's performance. In addition, Carrier Wales is able to extend its offering to include managed LAN services using ZyXEL's SMB Networking solutions making it a true end-to-end provider.

What the client says: *"Because of ZyXEL's knowledge and understanding of NGN, we were able to plan, test and deploy on budget and ahead of schedule. Their Metro Switches are both reliable and come at a price point which is cost effective. ZyXEL is a true next generation network partner"*
David Brook, Technical Director of Internet Services, Carrier Wales

Result: ZyXEL's, Metro Ethernet Forum (MEF) accredited, aggregation and access layer switches can reduce initial equipment costs by up to 60%. This type of saving means that Carrier Wales can build out Gigabit connectivity to the customer premise at virtually the cost of Ethernet speed – this in turn gives Carrier Wales the ability to future-proof bandwidth allowing extra capacity to be 'switched on' when required. By adding WiMAX to the end of the 'hardwired' network, high-speed Internet can reach out to remote communities. Carrier Wales has already launched its WiMAX service in Deeside, Sandycroft, Broughton, Ewloe and the Flintshire coast.

The Future: Carrier Wales intends to extend its WiMAX coverage to include Mold, St Asaph, The Wreham Industrial Estate and Liverpool town centre.

About Carrier Wales: Carrier Wales is a division of Integrated Digital Services (IDS), established to provide business communication connectivity services to businesses throughout Wales. IDS already has an enviable reputation as a reliable, value-for-money service provider for established networks and services. Carrier Wales partners with FibreSpeed to bring this service to the business.





Products Used:

XGS-4728F

L3 Managed 10G Stackable Metro Switch

- 24 Dual-personality Gigabit interfaces (24x1000 Base-T + 24xSFP ports)
- 2 x Cx4 stacking ports
- Optional 10G module
- L3 Advanced Routing protocols, OSPF, VRRP and DVMRP

MES-3728

24 port 10/100 L2 Metro Switch

- 24 Port 10/100Base-TX
- 2 Gigabit SFP ports
- 2 Dual-personality Gigabit uplinks
- Multilayer-aware (L2/L3/L4)

ES-315F

4 port 10/100 L2 Managed Switch

- 4 port 10/100
- 1x100BaseX SFP slot

