

MAC OS

Chrome

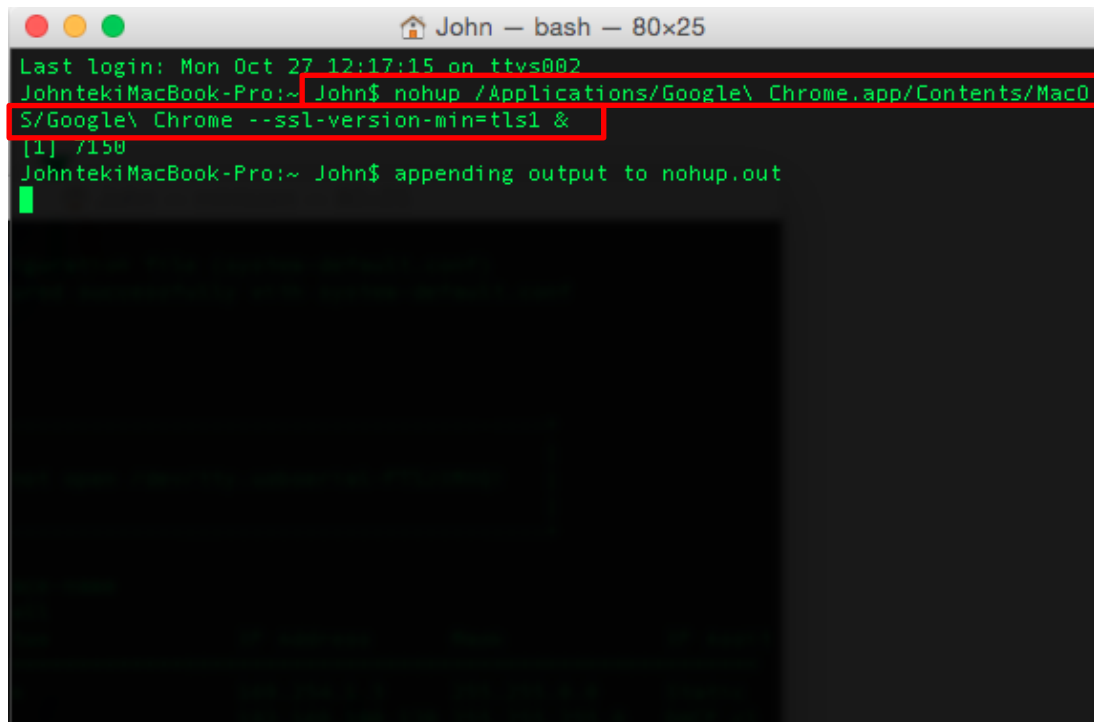
Solution 1:

Open Chrome via Terminal by typing:

```
nohup /Applications/Google\
```

```
Chrome.app/Contents/MacOS/Google\ Chrome
```

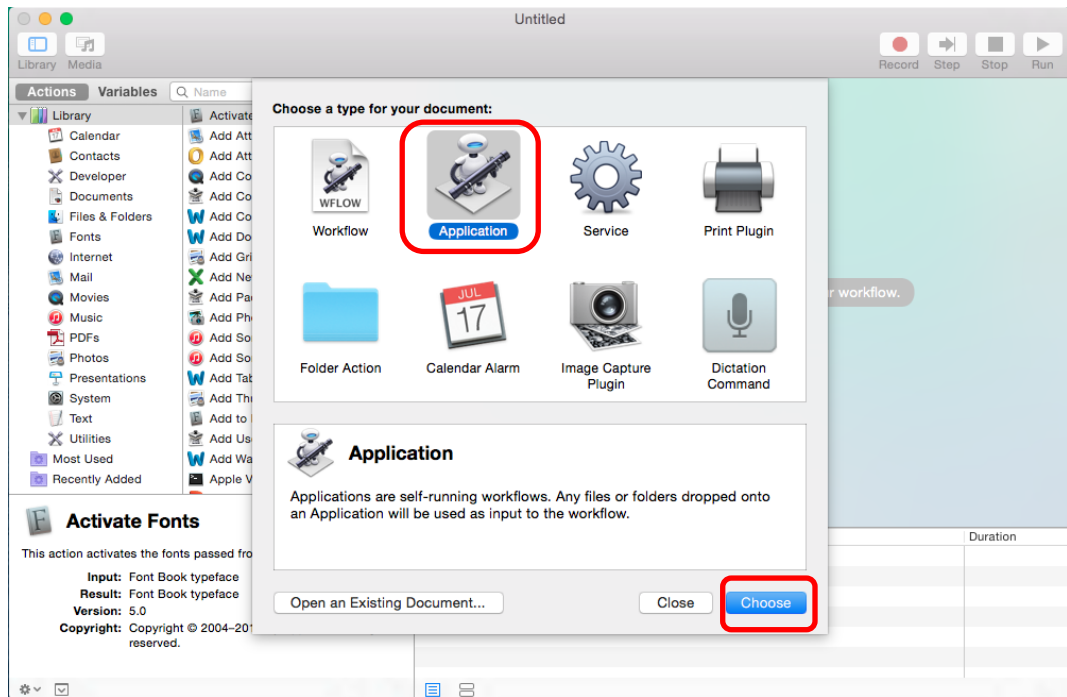
```
--ssl-version-min=tlsl &
```



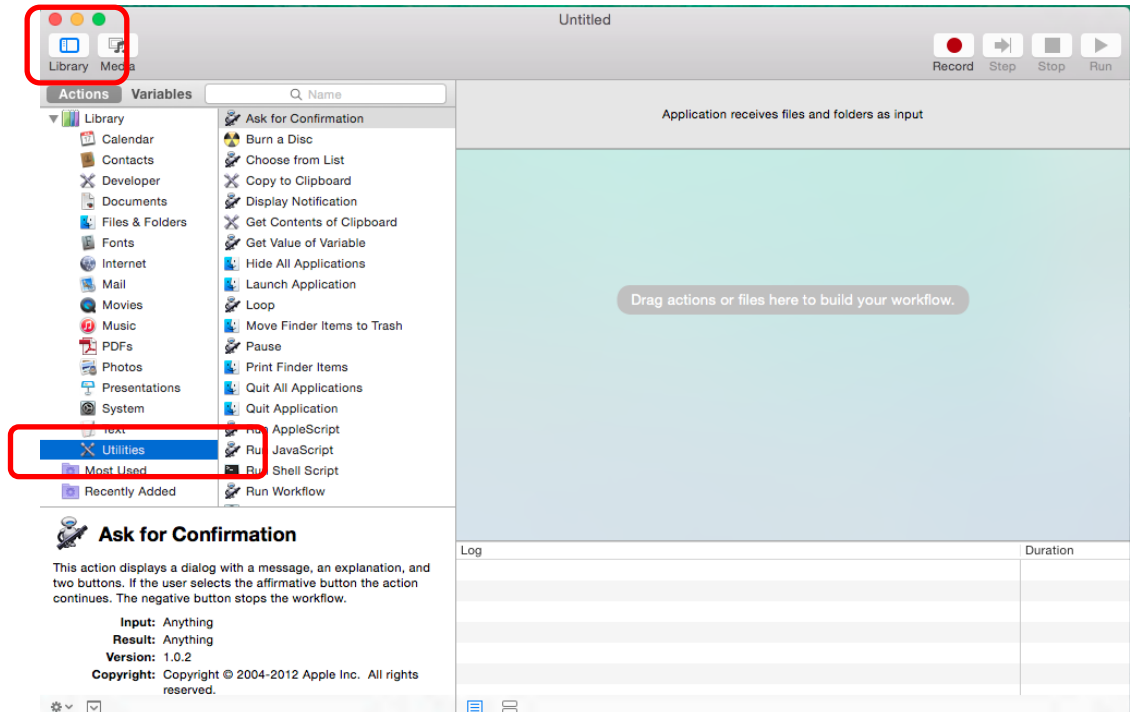
```
John — bash — 80x25
Last login: Mon Oct 27 12:17:15 on ttvs002
JohntekiMacBook-Pro:~ John$ nohup /Applications/Google\ Chrome.app/Contents/MacOS/Google\ Chrome --ssl-version-min=tlsl &
[1] 7150
JohntekiMacBook-Pro:~ John$ appending output to nohup.out
```

Solution 2:

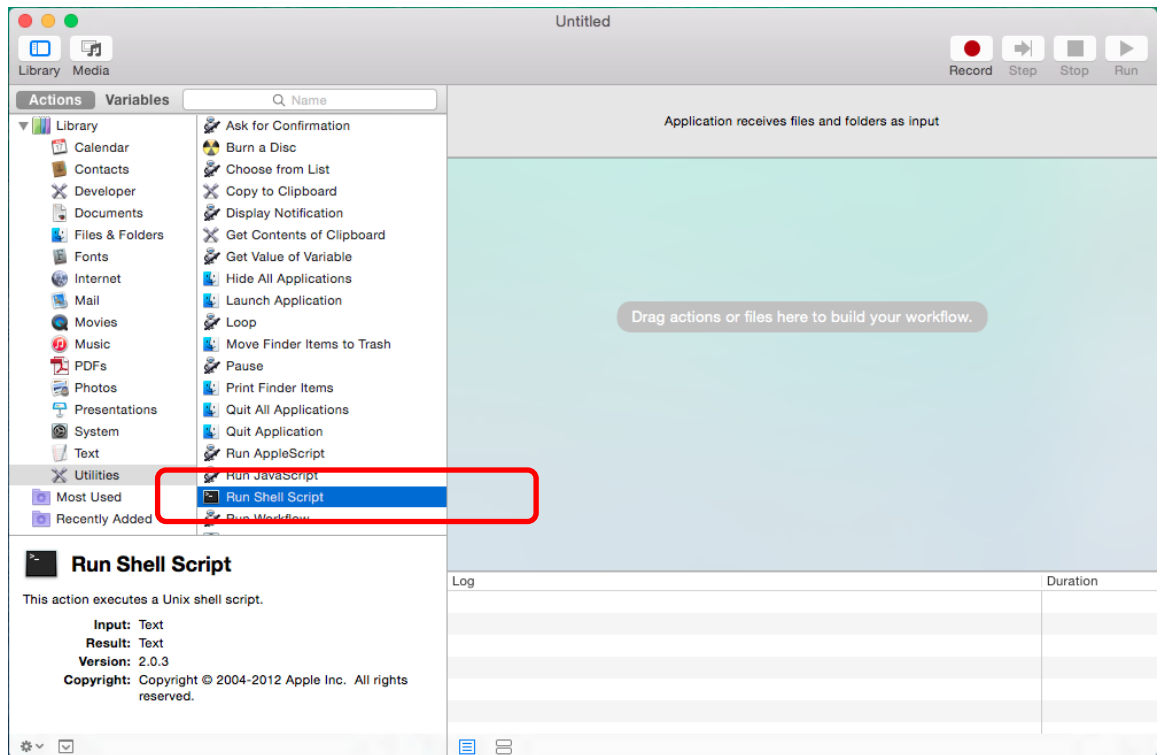
1. Launch Automator from Applications.



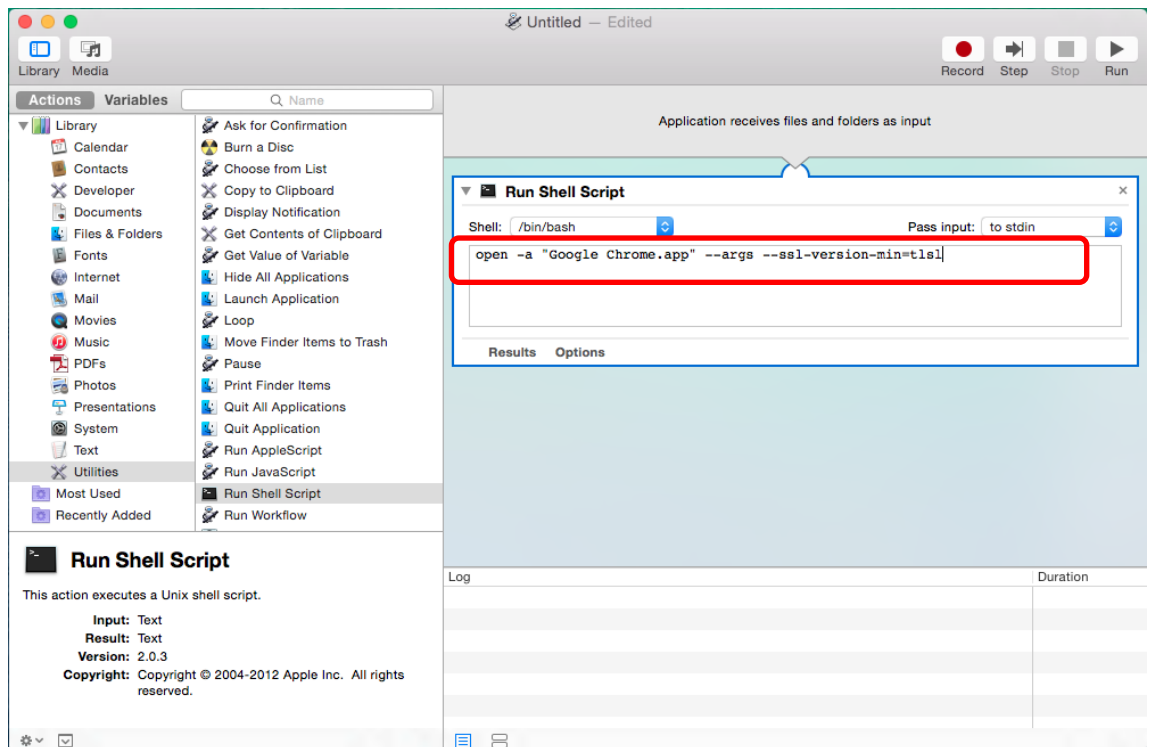
2. Select "Application" and click "Choose".
3. Select "Library" and then "Utilities" from the left column.



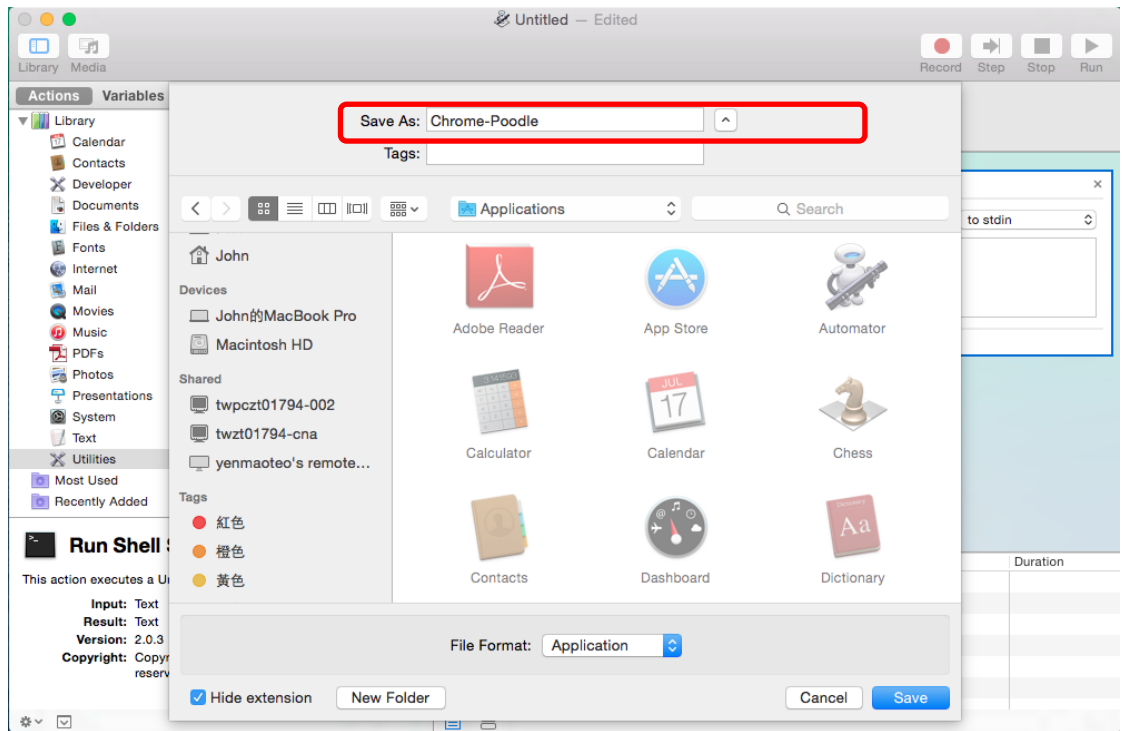
4. Double-click "Run Shell Script" to put it in the workflow area.



5. Replace "cat" with `open -a "Google Chrome.app" --args --ssl-version-min=tls1` and make sure it passes the input to stdin.



6. Save the workflow as an Application (I saved mine as 'Chrome - Poodle' in my applications folder).



7. Close Chrome.
8. Double-click on the new Chrome launcher you just made.

