

ZYXEL

Your Networking Ally



The Freedom to Do More

**PoE Switching
Solution Brief**



Zyxel**one** network
Redefining network integration

Why Zyxel PoE switches?

As demands for connection from networking devices such as IP phones, IP cameras and access points increase, deployment complexity and cost rise as well. For less cable usage and investment, Power over Ethernet (PoE) technology provides both data connection and electrical power to devices through just one cable.

To fulfill various applications and flexible network deployments in different sectors, Zyxel offers a complete portfolio including a wide range of Unmanaged, Smart Managed, and Managed PoE switches that

accommodate Power Devices (PD) without limitation thanks to the IEEE 802.3af and 802.3at standard support.

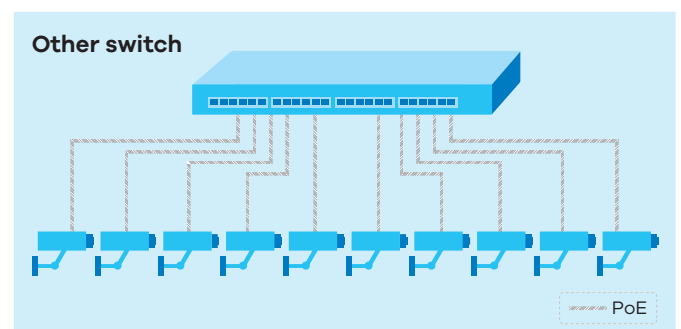
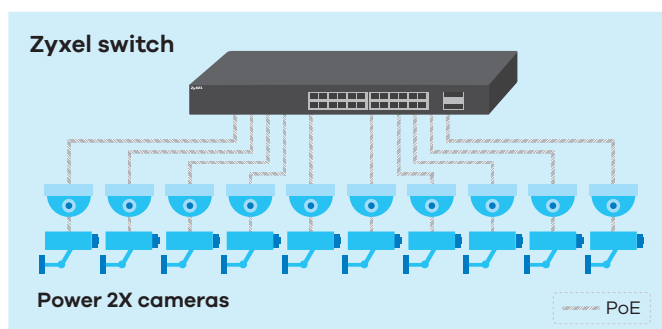
Zyxel PoE switches offer high PoE power budget that is almost double which of the competitors, and they support the 802.3at standard to easily fulfill power-hungry PD requirement such as Dome camera, pan-tilt-zoom (PTZ) camera and the latest 802.11ac AP.

Additionally, the Zyxel PoE switches are made with high-quality components to ensure stability and durable connectivity essential to PoE applications such as IP surveillance and more.

Power More Devices than Others

Zyxel PoE switches support the IEEE 802.3af PoE and 802.3at PoE Plus standards that provide up to 30 watts of power per port for advanced Powered Devices (PD) like 802.11ac wireless APs and video IP phones. Apart

from this, Zyxel 8- and 24-port PoE switches offers higher PoE power budget than others for more flexible PoE deployment.



Reduce Infrastructure and Installation Costs

Zyxel PoE switches support IEEE 802.3af and IEEE 802.3at standards so users can deploy normal or high-power PDs flexibly without additional settings. Zyxel PoE switches provide complete portfolio from 5 to 48 ports and allow connections for both 15.4-watt IEEE 802.3af devices and 30-watt IEEE 802.3at devices without power-socket restriction to provide high-speed transmissions at the same time.

Save Energy, and Save Money

The intelligent PoE technology enables more efficient use of power resources to deliver better ROI for businesses. In the Consumption Mode, the PoE switch automatically detects power consumption status of each PD and supplies only the required amount of power. This intelligent power allocation function minimizes the waste of power and helps businesses to save money while enabling the PoE switch to power more PDs. Zyxel smart and managed PoE switches feature PoE scheduling to supply power to devices only during working hours, saving energy and money while preventing improper use of business network resources.

Reliable Network Connectivity

Zyxel PoE switches can monitor individual and total power consumption levels and set power supply policies that maximize service availability. Users can prioritize ports to guarantee uninterrupted services to high priority PDs in time of power usage exceeding the power budget limit. The Zyxel PoE switch is capable of adjusting switch power classification based on the power budget PD needs to function properly. This ensures stable and reliable PoE network and extends PD's usability.

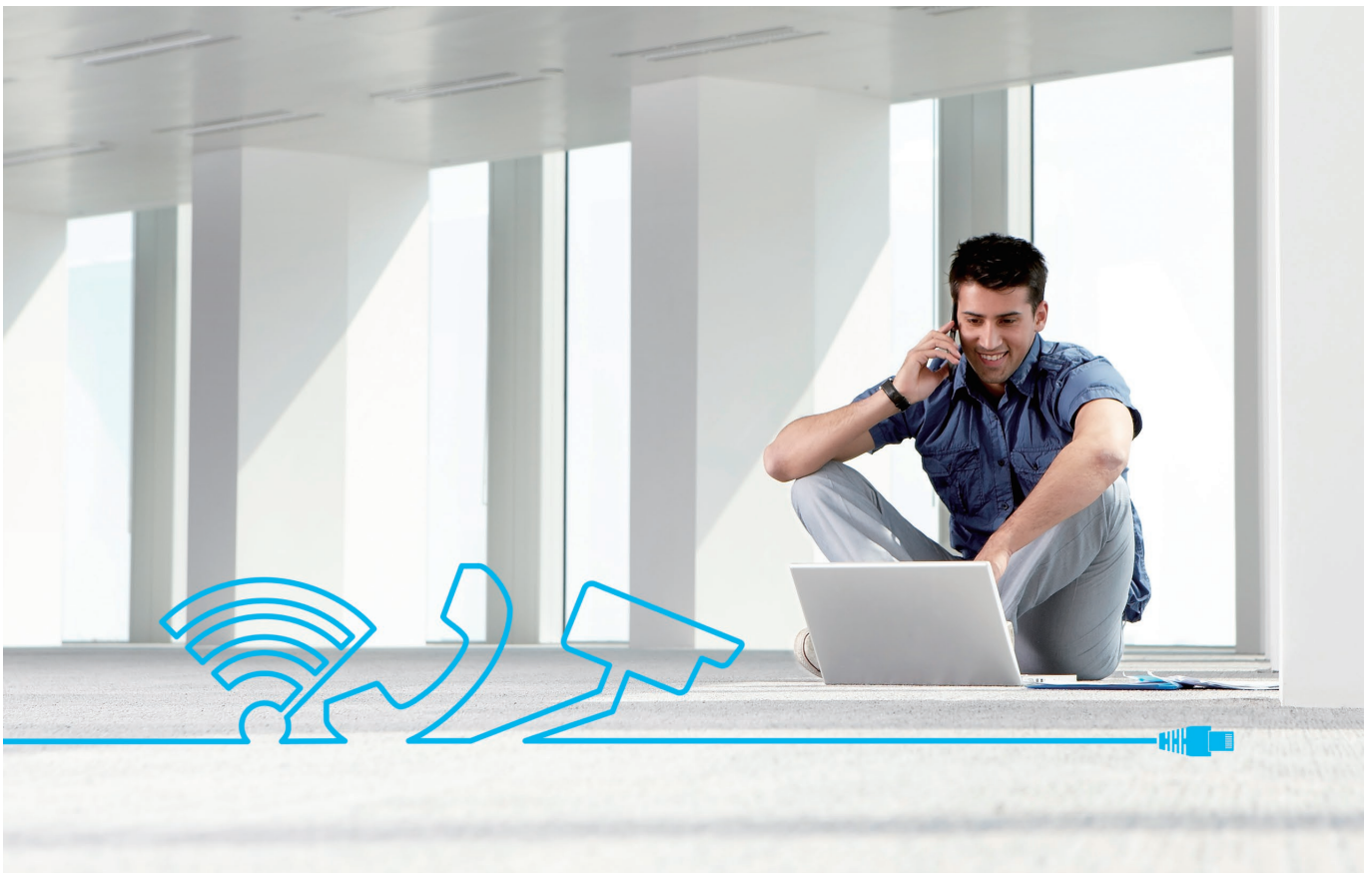
Centralized Control

Zyxel's PoE solution makes it easy for different sectors to deploy powered devices like VoIP phones, wireless APs and IP surveillance cameras in challenging places like ceilings, walls, outdoors, or wherever electrical outlets are not easily available. In addition, the neighboring features of Zyxel One Network can detect ports used by a neighboring device and display its IP information on the Web GUI of Zyxel PoE Switch to allow one-click remote control access via that IP. For example, if there's a connected PD fails to operate, users can reset PD to default setting or power cycle it remotely. This is a significant tool to save traveling costs in times of troubleshooting failure PD in the field.

Experience Whisper-Silent Operation

The new hybrid switches GS1920v2 and XGS1930 series have been designed with smart fan technology to automatically adjust fan speed based on the switch's

system temperature. This allows the switch to minimize the acoustic noise and offer a whisper-silent operation in office or SOHO environment.

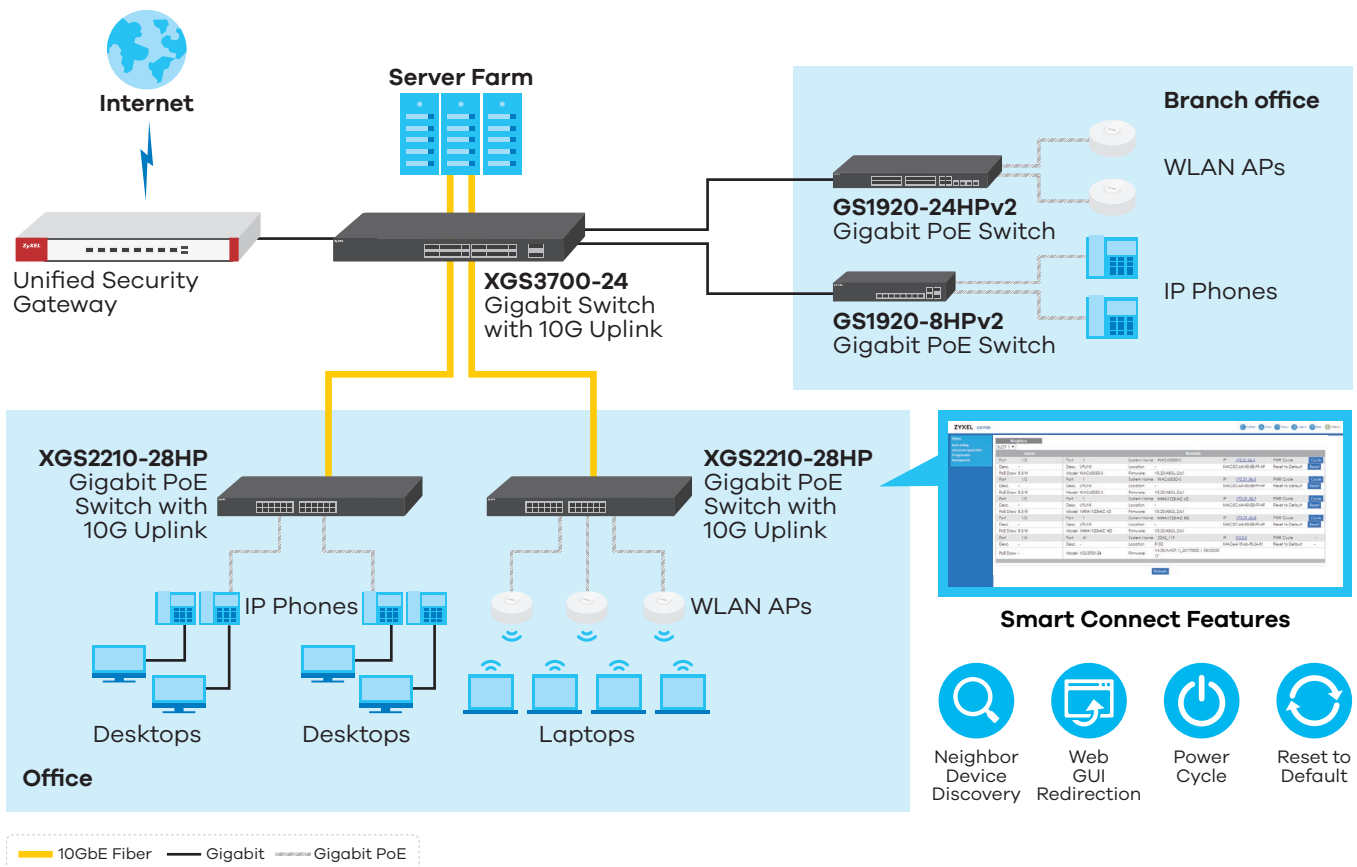


Zyxel One Network Experience

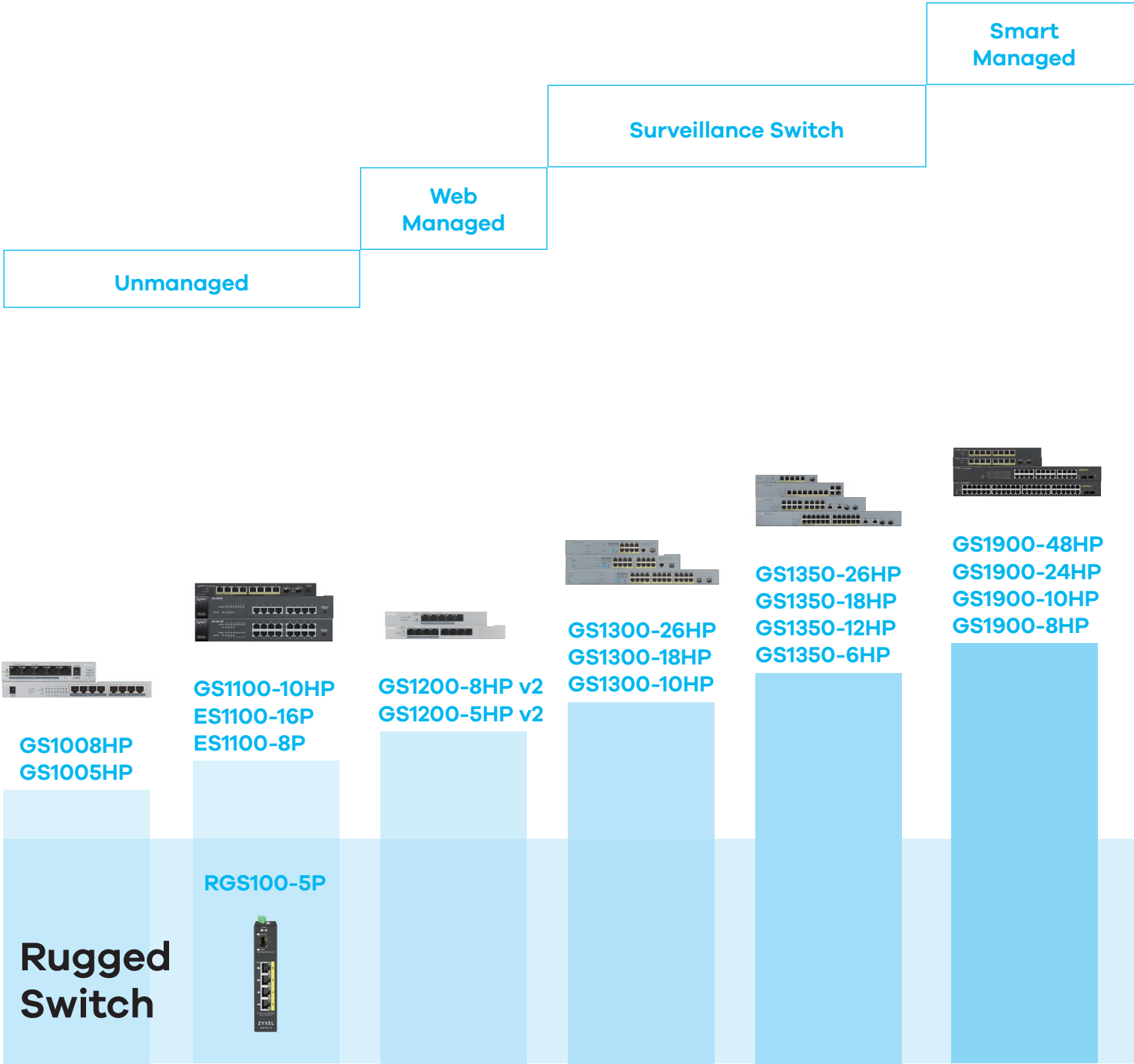
Aiming for relieving our customers from repetitive operations of deploying and managing a network, Zyxel One Network is designed to simplify the configuration, management, and troubleshooting, allowing our customers to focus on the business priorities. Zyxel One Network presents an easy-to-use tool, Zyxel One Network Utility (ZON Utility), to realize speed network setup. Zyxel Smart Connect allows Zyxel networking equipment to be aware and recognize each other and

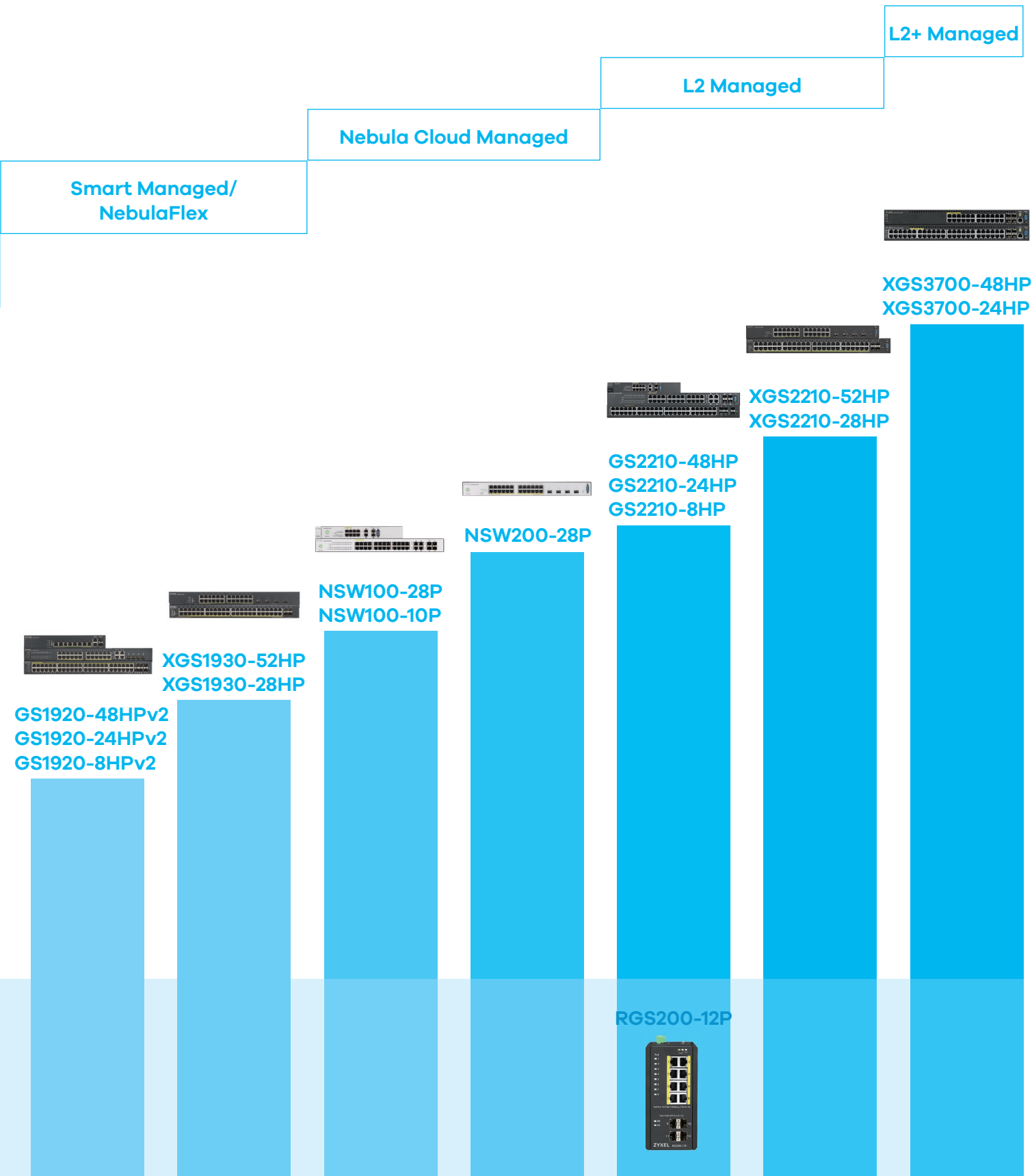
further facilitating the network maintenance via one-click remote functions such as factory reset or power cycling. Zyxel One Network redefines the network integration across multiple networking products from switch to WiFi AP and to Gateway.

Zyxel even opens up its One Network protocols to third-party developers to help them delivering more integrated, easy-to-deploy network applications.



PoE Switches Portfolio





PoE Switches Feature Matrix

| Type | Layer 2+ Managed | | Layer 2 Managed | | |
|--|-----------------------------------|-----------------------------------|-----------------|--------------|------------|
| Model | XGS3700-24HP | XGS3700-48HP | XGS2210-28HP | XGS2210-52HP | GS2210-8HP |
| PoE | | | | | |
| PoE ports | 24 | 48 | 24 | 48 | 8 |
| Total PoE power budget (watt) | Single PSU: 460 Dual PSU: 1000 | Single PSU: 460 Dual PSU: 1000 | 375 | 375 | 180 |
| High Power PoE+ | Yes | Yes | Yes | Yes | Yes |
| PoE scheduling | Yes | Yes | Yes | Yes | Yes |
| Ports | | | | | |
| Gigabit combo (RJ-45/SFP) | - | - | - | - | 2 |
| Gigabit SFP | - | - | - | - | - |
| 10-Gigabit SFP+ | 4 | 4 | 4 | 4 | - |
| Physical | | | | | |
| Fanless | - | - | - | - | - |
| Management | | | | | |
| Web GUI | Yes | Yes | Yes | Yes | Yes |
| Full Command Line Interface (CLI) | Yes | Yes | Yes | Yes | Yes |
| SNMP/Syslog | Yes | Yes | Yes | Yes | Yes |
| CNC Support | Yes | Yes | Yes | Yes | Yes |
| Zyxel One Network (ZON Utility, Smart Connect) | Yes | Yes | Yes | Yes | Yes |
| Zyxel Nebula (Cloud) | - | - | - | - | - |

| Type | Layer 2 Managed | | Smart Management/NebulaFlex | | |
|--|-----------------|-------------|-----------------------------|--------------|--------------|
| Model | GS2210-24HP | GS2210-48HP | XGS1930-28HP | XGS1930-52HP | GS1920-8HPv2 |
| PoE | | | | | |
| PoE ports | 24 | 48 | 24 | 48 | 8 |
| Total PoE power budget (watt) | 375 | 375 | 375 | 375 | 130 |
| High Power PoE+ | Yes | Yes | Yes | Yes | Yes |
| PoE scheduling | Yes | Yes | Yes | Yes | Yes |
| Ports | | | | | |
| Gigabit combo (RJ-45/SFP) | 4 | 4 | - | - | 2 |
| Gigabit SFP | - | 2 | - | - | - |
| 10-Gigabit SFP+ | - | - | 4 | 4 | - |
| Physical | | | | | |
| Fanless | - | - | - | - | Yes |
| Management | | | | | |
| Web GUI | Yes | Yes | Yes | Yes | Yes |
| Full Command Line Interface (CLI) | Yes | Yes | - | - | - |
| SNMP/Syslog | Yes | Yes | Yes | Yes | Yes |
| CNC Support | Yes | Yes | Yes | Yes | Yes |
| Zyxel One Network (ZON Utility, Smart Connect) | Yes | Yes | Yes | Yes | Yes |
| Zyxel Nebula (Cloud) | - | - | Yes | Yes | Yes |

| Type | Smart Management/NebulaFlex | | Nebula Cloud Management | | |
|--|-----------------------------|---------------|-------------------------|------------|------------|
| Model | GS1920-24HPv2 | GS1920-48HPv2 | NSW100-10P | NSW100-28P | NSW200-28P |
| PoE | | | | | |
| PoE ports | 24 | 48 | 8 | 24 | 24 |
| Total PoE power budget (watt) | 375 | 375 | 180 | 375 | 375 |
| High Power PoE+ | Yes | Yes | Yes | Yes | Yes |
| PoE scheduling | Yes | Yes | Yes | Yes | Yes |
| Ports | | | | | |
| Gigabit combo (RJ-45/SFP) | 4 | 4 | 2 | 4 | - |
| Gigabit SFP | - | 2 | - | - | - |
| 10-Gigabit SFP+ | - | - | - | - | 4 |
| Physical | | | | | |
| Fanless | - | - | - | - | - |
| Management | | | | | |
| Web GUI | Yes | Yes | - | - | - |
| Full Command Line Interface (CLI) | - | - | - | - | - |
| SNMP/Syslog | Yes | Yes | Yes | Yes | Yes |
| CNC Support | Yes | Yes | - | - | - |
| Zyxel One Network (ZON Utility, Smart Connect) | Yes | Yes | Yes | Yes | Yes |
| Zyxel Nebula (Cloud) | Yes | Yes | Yes | Yes | Yes |

| Type | Smart Management | | | | Surveillance Managed |
|--|------------------|-------------|-------------|-------------|----------------------|
| Model | GS1900-8HP | GS1900-10HP | GS1900-24HP | GS1900-48HP | GS1350-6HP |
| PoE | | | | | |
| PoE ports | 8 | 8 | 24 | 24 | 5 |
| Total PoE power budget (watt) | 70 | 77 | 170 | 170 | 60 |
| High Power PoE+ | Yes | Yes | Yes | Yes | Yes PoE++ (port 1-2) |
| PoE scheduling | Yes | Yes | Yes | Yes | Yes |
| Ports | | | | | |
| Gigabit combo (RJ-45/SFP) | - | - | - | - | - |
| Gigabit SFP | - | 2 | 2 | 2 | 1 |
| 10-Gigabit SFP+ | - | - | - | - | - |
| Physical | | | | | |
| Fanless | Yes | Yes | - | - | Yes |
| Management | | | | | |
| Web GUI | Yes | Yes | Yes | Yes | Yes |
| Full Command Line Interface (CLI) | - | - | - | - | Yes* |
| SNMP/Syslog | Yes | Yes | Yes | Yes | - |
| CNC Support | Yes | Yes | Yes | Yes | Yes |
| Zyxel One Network (ZON Utility, Smart Connect) | Yes | Yes | Yes | Yes | Yes |
| Zyxel Nebula (Cloud) | - | - | - | - | - |

* Via Telnet/SSHv2

| Type | Surveillance Managed | | | Surveillance Unmanaged | |
|--|----------------------|-------------|-------------|------------------------|-------------|
| Model | GS1350-12HP | GS1350-18HP | GS1350-26HP | GS1300-10HP | GS1300-18HP |
| PoE | | | | | |
| PoE ports | 8 | 16 | 24 | 8 | 16 |
| Total PoE power budget (watt) | 130 | 250 | 375 | 130 | 170 |
| High Power PoE+ | Yes | Yes | Yes | Yes | Yes |
| PoE scheduling | Yes | Yes | Yes | - | - |
| Ports | | | | | |
| Gigabit combo (RJ-45/SFP) | - | 2 | 2 | - | - |
| Gigabit SFP | 2 | - | - | 1 | 1 |
| 10-Gigabit SFP+ | - | - | - | - | - |
| Physical | | | | | |
| Fanless | - | - | - | - | - |
| Management | | | | | |
| Web GUI | Yes | Yes | Yes | - | - |
| Full Command Line Interface (CLI) | Yes* | Yes* | Yes* | - | - |
| SNMP/Syslog | - | - | - | - | - |
| CNC Support | Yes | Yes | Yes | - | - |
| Zyxel One Network (ZON Utility, Smart Connect) | Yes | Yes | Yes | - | - |
| Zyxel Nebula (Cloud) | - | - | - | - | - |

* Via Telnet/SSHv2

| Type | Surveillance Unmanaged | SOHO Web Management | | Unmanaged | |
|--|------------------------|---------------------|---------------|-------------|-----------------|
| Model | GS1300-26HP | GS1200-5HP v2 | GS1200-8HP v2 | GS1100-10HP | ES1100-8P |
| PoE | | | | | |
| PoE ports | 24 | 4 | 4 | 8 | 4 (10/100 Mbps) |
| Total PoE power budget (watt) | 250 | 60 | 60 | 130 | 64 |
| High Power PoE+ | Yes | Yes | Yes | Yes | - |
| PoE scheduling | - | - | - | - | - |
| Ports | | | | | |
| Gigabit combo (RJ-45/SFP) | - | - | - | - | - |
| Gigabit SFP | 2 | - | - | 2 | - |
| 10-Gigabit SFP+ | - | - | - | - | - |
| Physical | | | | | |
| Fanless | - | Yes | Yes | Yes | Yes |
| Management | | | | | |
| Web GUI | - | Yes | Yes | - | - |
| Full Command Line Interface (CLI) | - | - | - | - | - |
| SNMP/Syslog | - | - | - | - | - |
| CNC Support | - | - | - | - | - |
| Zyxel One Network (ZON Utility, Smart Connect) | - | - | - | - | - |
| Zyxel Nebula (Cloud) | - | - | - | - | - |

| Type | Unmanaged | | | Rugged | |
|--|-----------------|----------|----------|-----------|------------|
| Model | ES1100-16P | GS1005HP | GS1008HP | RGS100-5P | RGS200-12P |
| PoE | | | | | |
| PoE ports | 8 (10/100 Mbps) | 4 | 8 | 4 | 8 |
| Total PoE power budget (watt) | 130 | 60 | 60 | 120 | 240 |
| High Power PoE+ | - | Yes | Yes | Yes | Yes |
| PoE scheduling | - | - | - | - | Yes |
| Ports | | | | | |
| Gigabit combo (RJ-45/SFP) | - | - | - | - | - |
| Gigabit SFP | - | - | - | 1 | 4 |
| 10-Gigabit SFP+ | - | - | - | - | - |
| Physical | | | | | |
| Fanless | - | Yes | Yes | Yes | Yes |
| Management | | | | | |
| Web GUI | - | - | - | - | Yes |
| Full Command Line Interface (CLI) | - | - | - | - | Yes |
| SNMP/Syslog | - | - | - | - | Yes |
| CNC Support | - | - | - | - | Yes |
| Zyxel One Network (ZON Utility, Smart Connect) | - | - | - | - | - |
| Zyxel Nebula (Cloud) | - | - | - | - | - |

ZYXEL

Your Networking Ally

Corporate Headquarters

Zyxel Communications Corp.

Tel: +886-3-578-3942
Fax: +886-3-578-2439
Email: sales@zyxel.com.tw
http://www.zyxel.com

Europe

Zyxel Belarus

Tel: +375 17 334 6099
Fax: +375 17 334 5899
Email: sales@zyxel.by
http://www.zyxel.by

Zyxel BeNeLux

Tel: +31 23 555 3689
Fax: +31 23 557 8492
Email: sales@zyxel.nl
http://www.zyxel.nl
http://www.zyxel.be

Zyxel Bulgaria (Bulgaria, Macedonia, Albania, Kosovo)

Tel: +3592 4443343
Email: info@cz.zyxel.com
http://www.zyxel.bg

Zyxel Czech Republic

Tel: +420 241 091 350
Hotline: +420 241 774 665
Fax: +420 241 091 359
Email: sales@cz.zyxel.com
http://www.zyxel.cz

Zyxel Denmark A/S

Tel: +45 39 55 07 00
Fax: +45 39 55 07 07
Email: sales@zyxel.dk
http://www.zyxel.dk

Zyxel Finland

Tel: +358 9 4780 8400
Email: myynti@zyxel.fi
http://www.zyxel.fi

Zyxel France

Tel: +33 (0)4 72 52 97 97
Fax: +33 (0)4 72 52 19 20
Email: info@zyxel.fr
http://www.zyxel.fr

Zyxel Germany GmbH

Tel: +49 (0) 2405-6909 0
Fax: +49 (0) 2405-6909 99
Email: sales@zyxel.de
http://www.zyxel.de

Zyxel Hungary & SEE

Tel: +36 1 848 0690
Email: info@zyxel.hu
http://www.zyxel.hu

Zyxel Iberia

Tel: +34 911 792 100
Email: ventas@zyxel.es
http://www.zyxel.es

Zyxel Italy

Tel: +39 011 2308000
Email: info@zyxel.it
http://www.zyxel.it

Zyxel Norway

Tel: +47 22 80 61 80
Fax: +47 22 80 61 81
Email: salg@zyxel.no
http://www.zyxel.no

Zyxel Poland

Tel: +40 31 0809 888
Hotline: +48 226 521 626
Fax: +48 223 338 251
Email: info@pl.zyxel.com
http://www.zyxel.pl

Zyxel Romania

Tel: +40 31 0809 888
Fax: +40 31 0809 890
Email: info@cz.zyxel.com
http://www.zyxel.ro

Zyxel Russia

Tel: +7 (495) 539-9935
Fax: +7 (495) 542-8925
Email: info@zyxel.ru
http://www.zyxel.ru

Zyxel Slovakia

Tel: +421 220 861 847
Hotline: +421 220 861 848
Fax: +421 243 193 990
Email: info@cz.zyxel.com
http://www.zyxel.sk

Zyxel Sweden A/S

Tel: +46 8 55 77 60 60
Fax: +46 8 55 77 60 61
Email: sales@zyxel.se
http://www.zyxel.se

Zyxel Switzerland

Tel: +41 (0)44 806 51 00
Fax: +41 (0)44 806 52 00
Email: info@zyxel.ch
http://www.zyxel.ch

Zyxel Turkey A.S.

Tel: +90 212 314 18 00
Fax: +90 212 220 25 26
Email: bilgi@zyxel.com.tr
http://www.zyxel.com.tr

Zyxel UK Ltd.

Tel: +44 (0) 118 9121 700
Fax: +44 (0) 118 9797 277
Email: sales@zyxel.co.uk
http://www.zyxel.co.uk

Zyxel Ukraine

Tel: +380 (50) 440 88 61
Email: evelichko@zyxel.eu
http://www.zyxel.ua

Asia

Zyxel China (Shanghai) China Headquarters

Tel: +86-021-61199055
Fax: +86-021-52069033
Email: sales@zyxel.cn
http://www.zyxel.cn

Zyxel China (Beijing)

Tel: +86-010-62602249
Email: sales@zyxel.cn
http://www.zyxel.cn

Zyxel China (Tianjin)

Tel: +86-022-87890440
Fax: +86-022-87892304
Email: sales@zyxel.cn
http://www.zyxel.cn

Zyxel India

Tel: +91-11-4760-8800
Fax: +91-11-4052-3393
Email: info@zyxel.in
http://www.zyxel.in

Zyxel Kazakhstan

Tel: +7-727-2590-699
Fax: +7-727-2590-689
Email: info@zyxel.kz
http://www.zyxel.kz

Zyxel Korea Corp.

Tel: +82-2-890-5535
Fax: +82-2-890-5537
Email: sales@zyxel.kr
http://www.zyxel.kr

Zyxel Malaysia

Tel: +603 2282 1111
Fax: +603 2287 2611
Email: sales@zyxel.com.my
http://www.zyxel.com.my

Zyxel Middle East FZE

Tel: +971 4 372 4483
Cell: +971 562146416
Email: sales@zyxel-me.com
http://www.zyxel-me.com

Zyxel Philippine

Email: sales@zyxel.com.ph
http://www.zyxel.com.ph

Zyxel Singapore

Tel: +65 6339 3218
Hotline: +65 6339 1663
Fax: +65 6339 3318
Email: sales@zyxel.com.sg
http://www.zyxel.com.sg

Zyxel Taiwan (Taipei)

Tel: +886-2-2739-9889
Fax: +886-2-2735-3220
Email: sales_tw@zyxel.com.tw
http://www.zyxel.com.tw

Zyxel Thailand

Tel: +66-(0)-2831-5315
Fax: +66-(0)-2831-5395
Email: info@zyxel.co.th
http://www.zyxel.co.th

Zyxel Vietnam

Tel: (+848) 35202910
Fax: (+848) 35202800
Email: sales_vn@zyxel.com.tw
http://www.zyxel.com/vn/vi/

The Americas

Zyxel USA

North America Headquarters
Tel: +1-714-632-0882
Fax: +1-714-632-0858
Email: sales@zyxel.com
http://us.zyxel.com

Zyxel Brazil

Tel: +55 (11) 3373-7470
Fax: +55 (11) 3373-7510
Email: comercial@zyxel.com.br
http://www.zyxel.com/br/pt/

For more product information, visit us on the web at www.zyxel.com

Copyright © 2019 Zyxel Communications Corp. All rights reserved. Zyxel, Zyxel logo are registered trademarks of Zyxel Communications Corp. All other brands, product names, or trademarks mentioned are the property of their respective owners. All specifications are subject to change without notice.

