



Success Story

Ona Hotels Sóller Bay in Spain is gearing up for market-leading position with Zyxel GPON End-to-End Solutions



Hospitality

INDUSTRY



CUSTOMER

Ona Hotels
Sóller bay



COUNTRY

Spain



SOLUCIÓN

Zyxel
GPON
Solution

Overview

Challenges

- Inadequate WiFi performance for increased devices and services
- Multiple services through different deployments cause inconvenience
- Lack of an all-in-one system for managing and monitoring network

Solution

- Zyxel GPON Solution

Results

- Upgrades the existing LAN network by simply adding Zyxel's equipment
- Remote configurations, fault diagnosis and performance monitoring of the OLTs and ONTs from the central site via Zyxel NetAtlas
- High-speed internet, steady WiFi connectivity, and uninterrupted voice service via PMG5622GA
- PMG5622GA plays as GPON terminal which reserves space and enables flexibility
- Provides future network capacity expansion possibility

"Zyxel is a brand we know of and their products and solutions are always preferred. By the end of the project, we can see that we have selected the right solution."

Raul García
IT Manager, Ona Hotels Sóller Bay.

Background

Ona Hotels Sóller Bay, a well-known 4-star hotel in Mallorca, Spain, was searching for future-proof, all-in-one solutions to upgrade its existing internet infrastructure for better WiFi coverage, higher bandwidth capacity, and connection speeds. With the comprehensive product portfolios and

decades of broadband expertise, Zyxel Networks partnered with Grupo Royal Telecom, the local system integration vendor of the hotel, to provide Ona Hotels tailored GPON End-to-End Solutions.

Challenges

Originally using an Ethernet network with limited bandwidth and speeds, Ona Hotels struggled in accommodating the growing numbers of connected devices and satisfying customers with the latency-sensitive premium services.

Moreover, lacking a voice, video, and data all-in-one solution with Element Management System (EMS) support obstructs the hotel from efficiently monitoring and managing its network in real-time.

Solutions and Benefits

The hotel decided to use Zyxel's GPON End-to-End Solution which consists of Zyxel **OLT1408A 1U Pizza Box 8-port GPON OLT** and **PMG5622GA Dual-Band Wireless AC ONT Gateway with RF overlay**. The OLT1408A supports a split ratio of up to 1:128 which guarantees the quality of each signal transmitted through it and supports high-density deployments. Incorporating both Ethernet and fiber technologies in one platform, the OLT1408A meets the expectations of the hotel in integrating the new GPON network from the existing Ethernet network. It provides a scalable access platform supporting various access interfaces to ensure smooth network upgrades to 10G and above. Moreover, the power-efficient and temperature-hardened features of OLT1408A allows superior deployment flexibility and saves maintenance costs.

Fully interoperable with OLT1408A, the PMG5622GA supports internet, wireless, VoIP and CATV signals. The product extends fiber access and enables seamless wireless connectivity across the hotel with the optimized dual-band Front-End Module (FEM) design. Supporting RF overlay technology, the PMG5622GA enables legacy CATV services via GPON network, ensures uninterrupted data traffic, and helps the hotel simplify the technical maintenance with lower operating costs.

Both the OLT1408A and the PMG5622GA support the Zyxel NetAtlas Element Management System (EMS),

a centralized, scalable network management platform with multi-site networking access. Featuring Zyxel-specific parameters, the NetAtlas EMS system provides network-wide, real-time visibility and user-friendly monitor interface that enables remote configuration, diagnosis, and monitoring. With the system, hotel IT staff can quickly control device failures and contact service providers to fix the issues.

"Zyxel is a brand we know of and their products and solutions are always preferred. By the end of the project, we can see that we have selected the right solution," said Raul García, IT Manager from Ona Hotels Sóller Bay.

By implementing Zyxel's GPON End-to-End Solutions in the Ona Hotels Sóller Bay's network, Grupo Royal Telecom was able to provide the hotel guests with seamless internet experiences from corner to corner and open more opportunities with substantially improved facilities. The solutions also open the possibility for network development and smooth migration to WiFi 6 deployment.

The collaboration between Zyxel and Grupo Royal Telecom not only demonstrates Zyxel's capabilities to provide customer-oriented and cost-effective solutions but also helps Grupo Royal Telecom establish a reputation for network deployment in the vertical markets.

Products Used

OLT1408A • 1U 8-port Pizza Box GPON OLT



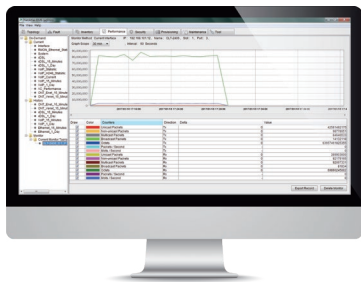
- 8 ITU-T G.984-compliant GPON ports; each port supports up to 128 ONT
- 4 x 10GbE/2.5GbE/GbE ports (SFP+/SFP, fiber)
- Dual power module plus battery charger
- Temperature-hardened

PMG5622GA • Dual-Band Wireless AC GPON HGU with 4-port GbE LAN and RF Overlay



- RF overlay enables traditional CATV video services through GPON networks
- Superior coverage with unique concurrent dual-band wireless circuit design
- 802.11n WLAN for superior performance and coverage
- Auto-provisioning and management through EMS along with OMCI

NetAtlas EMS • NetAtlas Element Management System



- Advanced system management, network configuration, performance monitoring, fault detection, and security control features
- Up to 3000 NE or 2M DSL ports
- XML/SOAP northbound interface

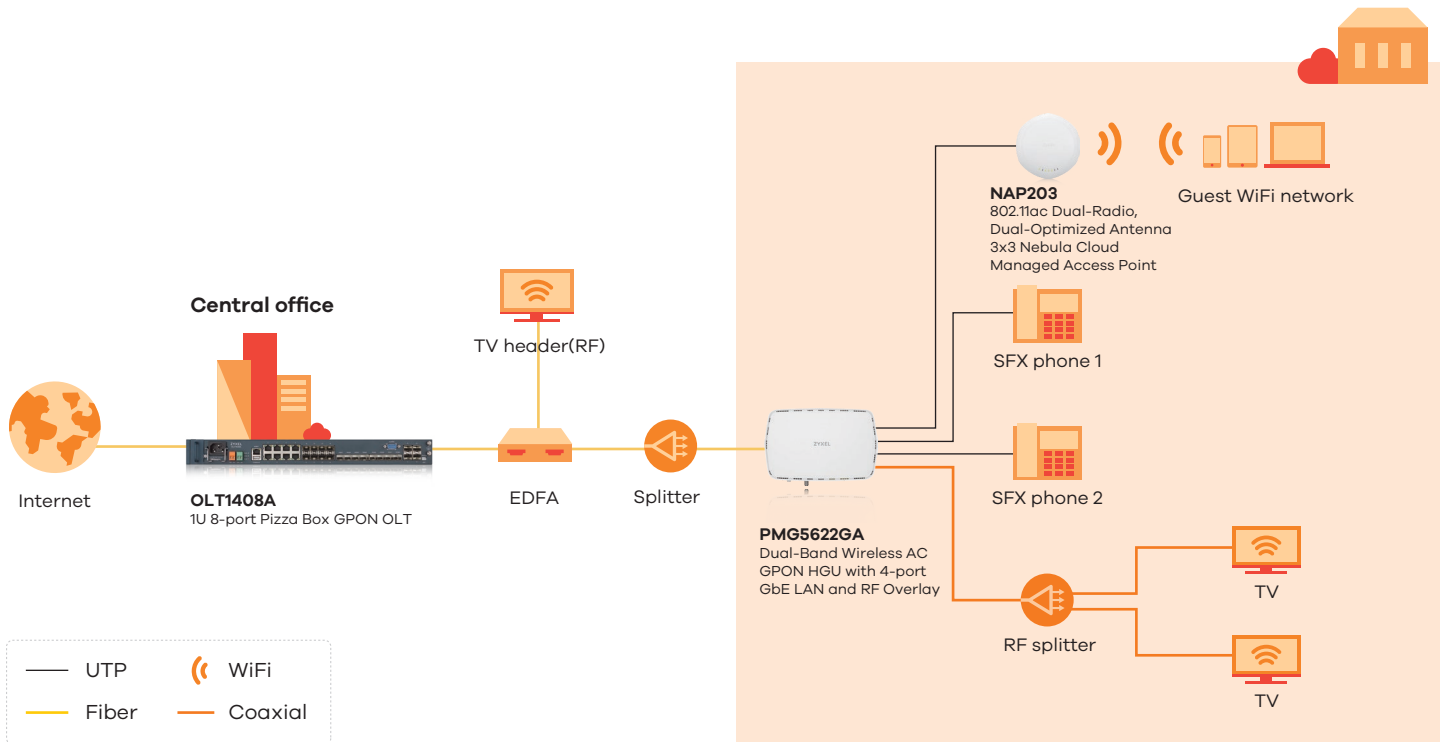
Products Used

NAP203 • 802.11ac Dual-Radio, Dual-Optimized Antenna 3x3 Nebula Cloud Managed Access Point



- Cloud-managed dual-radio 3x3 MIMO 802.11ac AP
- Supports combined data rates of up to 1.75 Gbps
- Dual-optimized antenna allows pattern optimization adapting to wall- or ceiling-mount installations
- Self-configuration and zero-touch deployment
- Enterprise-class security and RF optimization
- Dynamic channel selection, load balancing, and smart client steering
- Ultra-slim, 32-mm-thick ID design blends into any modern decor

Diagram



About Zyxel Networks

Focused on innovation and customer-centricity, Zyxel has been connecting people to the Internet for over 30 years. Our ability to adapt and innovate with networking technology places us at the forefront of creating connectivity for business and home users. We're building the networks of tomorrow, unlocking potential, and meeting the needs of the modern workplace — powering people at work, life, and play. Zyxel, Your Networking Ally.

Copyright © 2020 Zyxel and/or its affiliates. All Rights Reserved. Zyxel, Zyxel logo are registered trademarks of Zyxel Communications Corp. All other brands, product names, or trademarks mentioned are the property of their respective owners. All specifications are subject to change without notice.