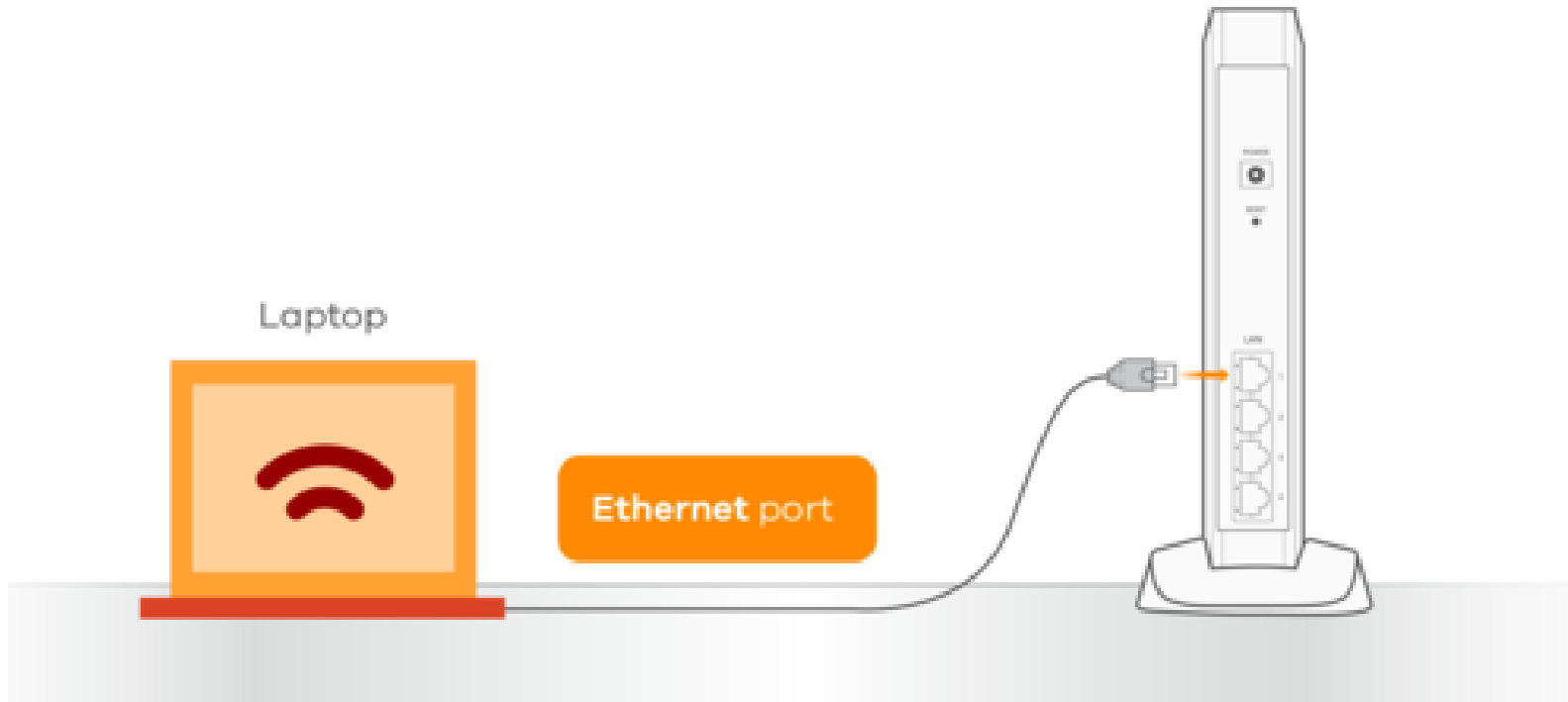


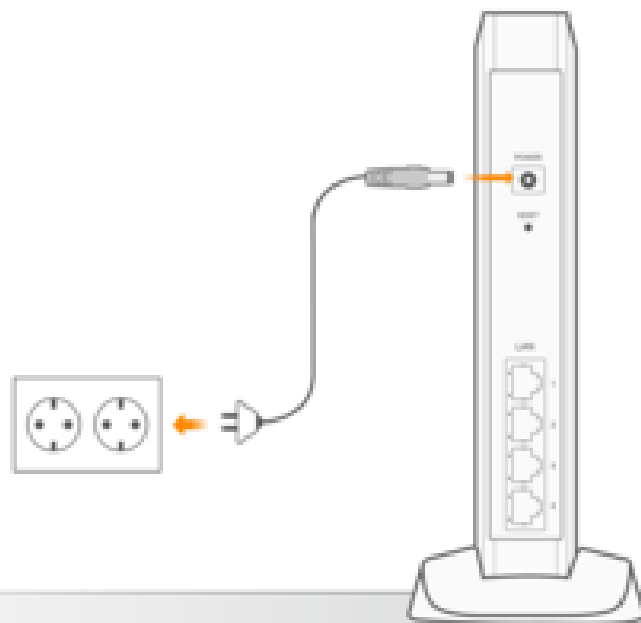
Repeater Mode

Installation and firmware upgrade instruction

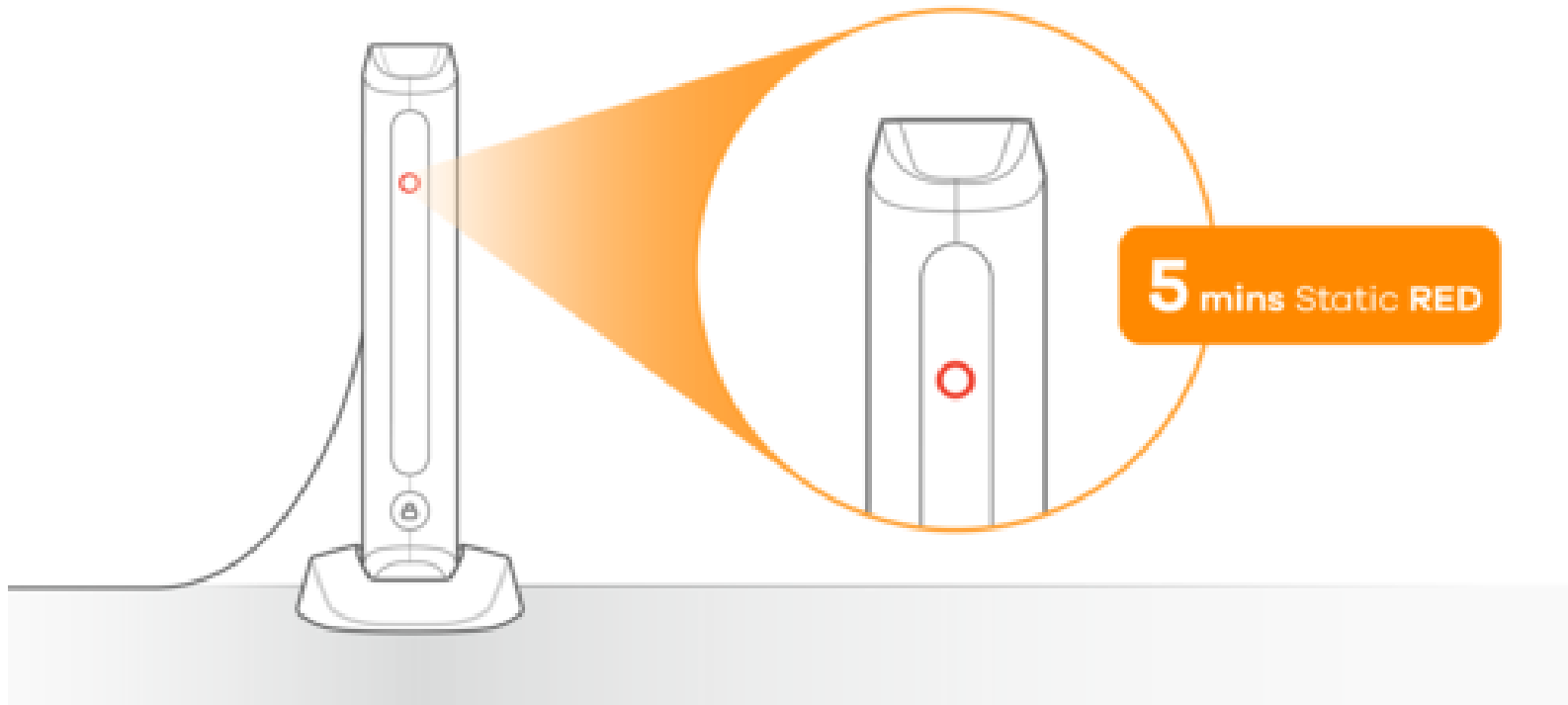
Connect your computer to ARMOR X1 with an Ethernet cable

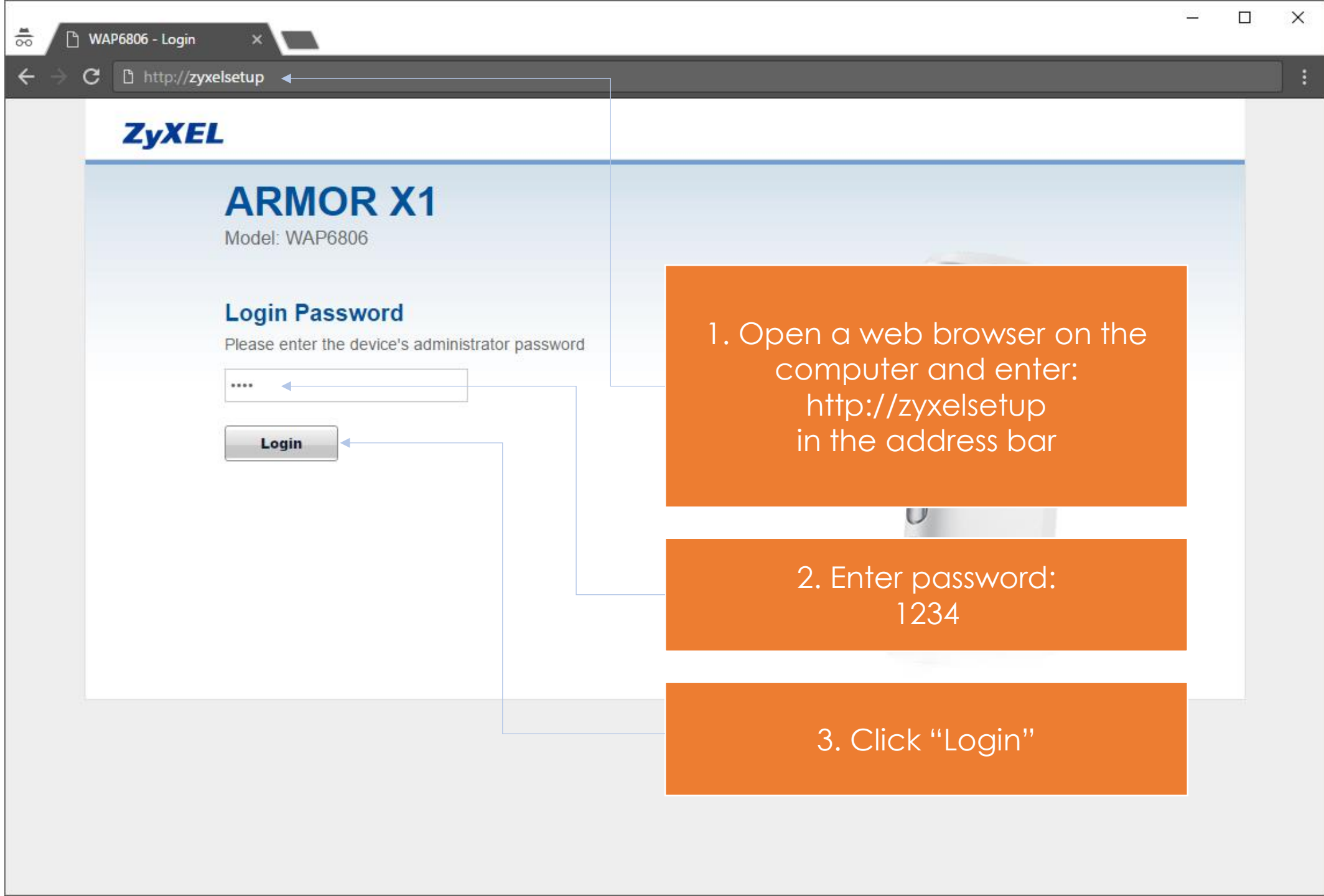


Power on your ARMOR X1 by connecting the power adapter to it and plugging it to a wall outlet



Wait 5 minutes and check that the LED is static red





ZyXEL

ARMOR X1

Model: WAP6806

Login Password

Please enter the device's administrator password

....

Login

1. Open a web browser on the computer and enter:
http://zyxelsetup
in the address bar

2. Enter password:
1234

3. Click "Login"

**ZyXEL**

ARMOR X1

Model: WAP6806

Change Default Password

For security purpose, please enter a new administrator password

 Please write this new password down for future reference

1. Enter a new administrator password to your preference. We recommend you write this down in case you need it in the future.



2. Click "Change"

[\[Skip Setup \]](#)

eaZy 123 Setup

Choose which mode you'd like to use

Access Point mode adds a wireless network to your existing network. **Client mode** connects you to an existing wireless network. **Repeater mode** extends your existing wireless network.

[Access Point Mode](#)[Client Mode](#)[Repeater Mode](#)

ZyXEL Communications (C) 2015

Click "Repeater Mode"



eaZy 123 - Detecting...



zyxelsetup/ZyXEL/eaZy/genie-ex.cgi



ZyXEL

eaZy 123 Setup

Scanning Wi-Fi Network...



You may need to wait up to 60 seconds...

ZyXEL Communications (C) 2015

Wait for it to finish scanning

**ZyXEL**[\[Skip Setup \]](#)

eaZy 123 Setup

1 Choose a 2.4 GHz Wi-Fi network

Choose your 2.4 GHz Wi-Fi network you wish to extend. We recommend to

Select	Signal(%)	Wi-Fi Network		
<input checked="" type="radio"/>	100	Zyxel		
<input type="radio"/>	100	Bear-Fi		
<input type="radio"/>	60	Kevin	WPA1PSKWPA2PSK/AES	11b/g/n
<input type="radio"/>	37	HsinchuPi-New	WPA1PSKWPA2PSK/TKIPAES	11b/g/n
<input type="radio"/>	13	3F-6	WPA1PSKWPA2PSK/TKIPAES	11b/g/n
<input type="radio"/>	7	Home	WPA1PSKWPA2PSK/TKIPAES	11b/g/n

[Continue](#)[Scan Again](#)[Choose](#)

1. Choose a Wi-Fi network you wish to repeat/extend

2. Click "Continue"

[\[Skip Setup \]](#)

eaZy 123 Setup

2 Enter 2.4 GHz Wi-Fi Network's Password

Please enter in the 2.4 GHz wireless network's password that you're extending

ZyXEL Communica

1. Enter the Wi-Fi network's password

2. Click "Continue"

[\[Skip Setup \]](#)

eaZy 123 Setup

1 Choose a 5 GHz Wi-Fi network

Choose your 5 GHz Wi-Fi network you wish to extend. We recommend to ha

Select	Signal(%)	Wi-Fi Network
<input type="radio"/>	100	Bear-Fi
<input checked="" type="radio"/>	100	Zyxel

[Continue](#)[Scan Again](#)[Choose Network Manually](#)[Skip 5 GHz](#)

ZyXEL Communications (C) 2015

1. Choose a 5 GHz Wi-Fi network
you wish to repeat/extend

2. Click "Continue"

[\[Skip Setup \]](#)

eaZy 123 Setup

2 Enter 5 GHz Wi-Fi Network's Password

Please enter in the 5 GHz wireless network's password that you're extending

ZyXEL Communications (C) 2015

1. Enter the Wi-Fi network's password

2. Click "Continue"

**ZyXEL****eaZy 123****3 Set Your Repeater's Wireless Network****2.4 GHz Wireless Name (SSID):**

Zyxel

2.4 GHz Wireless Password (WPA2):

87654321

5 GHz Wireless Name (SSID):

Zyxel

5 GHz Wireless Password (WPA2):

87654321

**IMPORTANT!**

Please write down all information that you've input here, so that you can refer to it in the future. When you're ready to apply this setup, click on "Apply"

(Optional) Change your repeat/extended Wi-Fi network name and password



**ZyXEL****eaZy 123****3 Set Your Repeater's Wireless Network****2.4 GHz Wireless Name (SSID):**

Zyxel-ext

2.4 GHz Wireless Password (WPA2):

87654321

5 GHz Wireless Name (SSID):

Zyxel-ext.speed

5 GHz Wireless Password (WPA2):

87654321

**IMPORTANT!**

Please write down all information that you've input here, so that you can refer to it in the future. When you're ready to apply this setup, click on "Apply"

In this example, we added "-ext" to the Wireless Name





2.4 GHz Wireless Name (SSID):

5 GHz Wireless Name (SSID):

2.4 GHz Wireless Password (WPA2):

5 GHz Wireless Password (WPA2):

**IMPORTANT!**

Please write down all information that you've input here, so that you can refer to it in the future. When you're ready to apply this setup, click on "Apply"



1. Scroll down

2. Click "Apply"



eaZy 123 Setup

Applying your Wi-Fi settings...



If you're using a wireless device to setup you may need to reconnect to your new Wi-Fi network...

New 2.4 GHz Wi-Fi Network

Wireless Name: Zyxel-ext

Wireless Password: 87654321

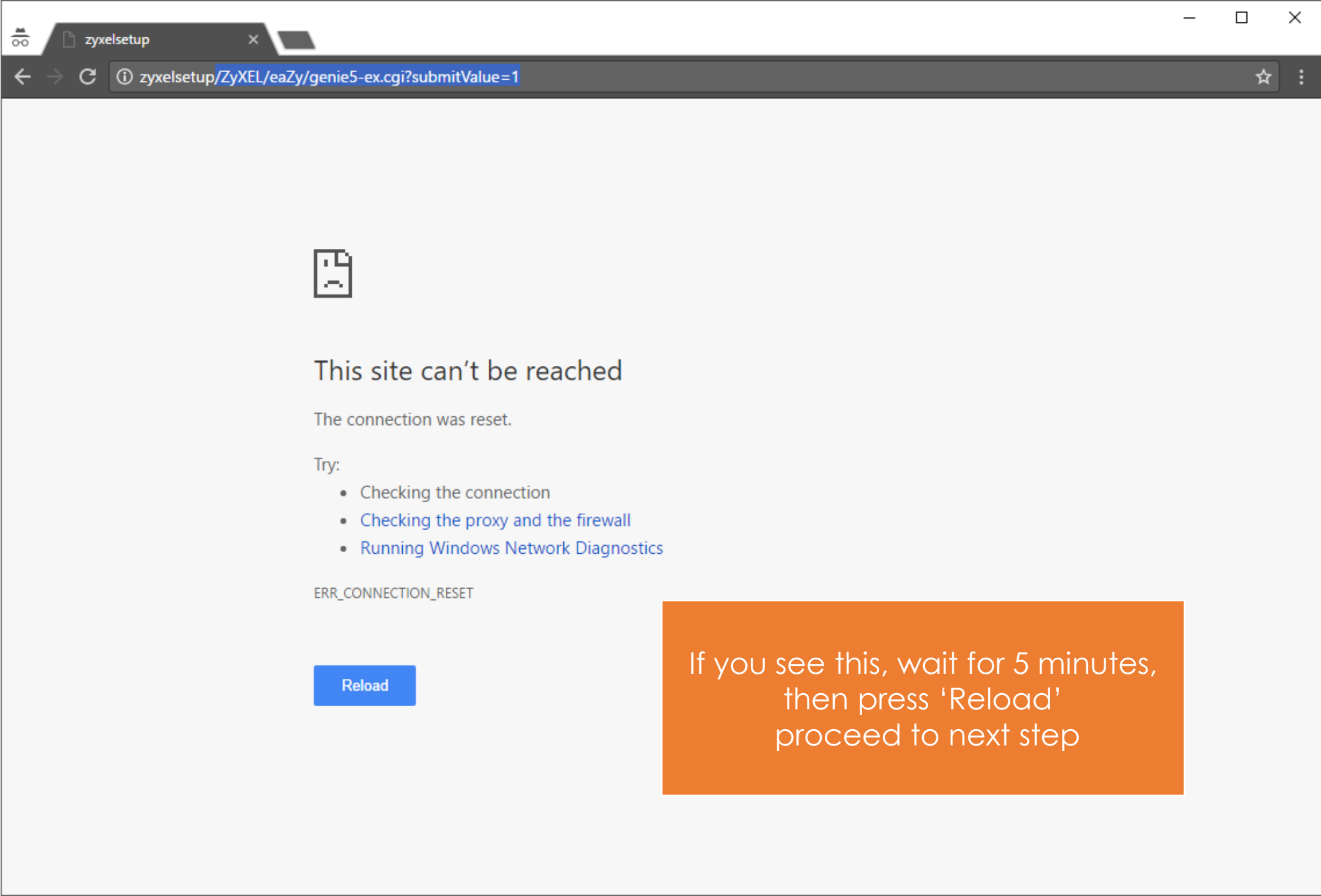
New 5 GHz Wi-Fi Network

Wireless Name: Zyxel-ext.speed

Wireless Password: 87654321

ZyXEL Communications (C) 2015

Wait for it to apply



This site can't be reached

The connection was reset.

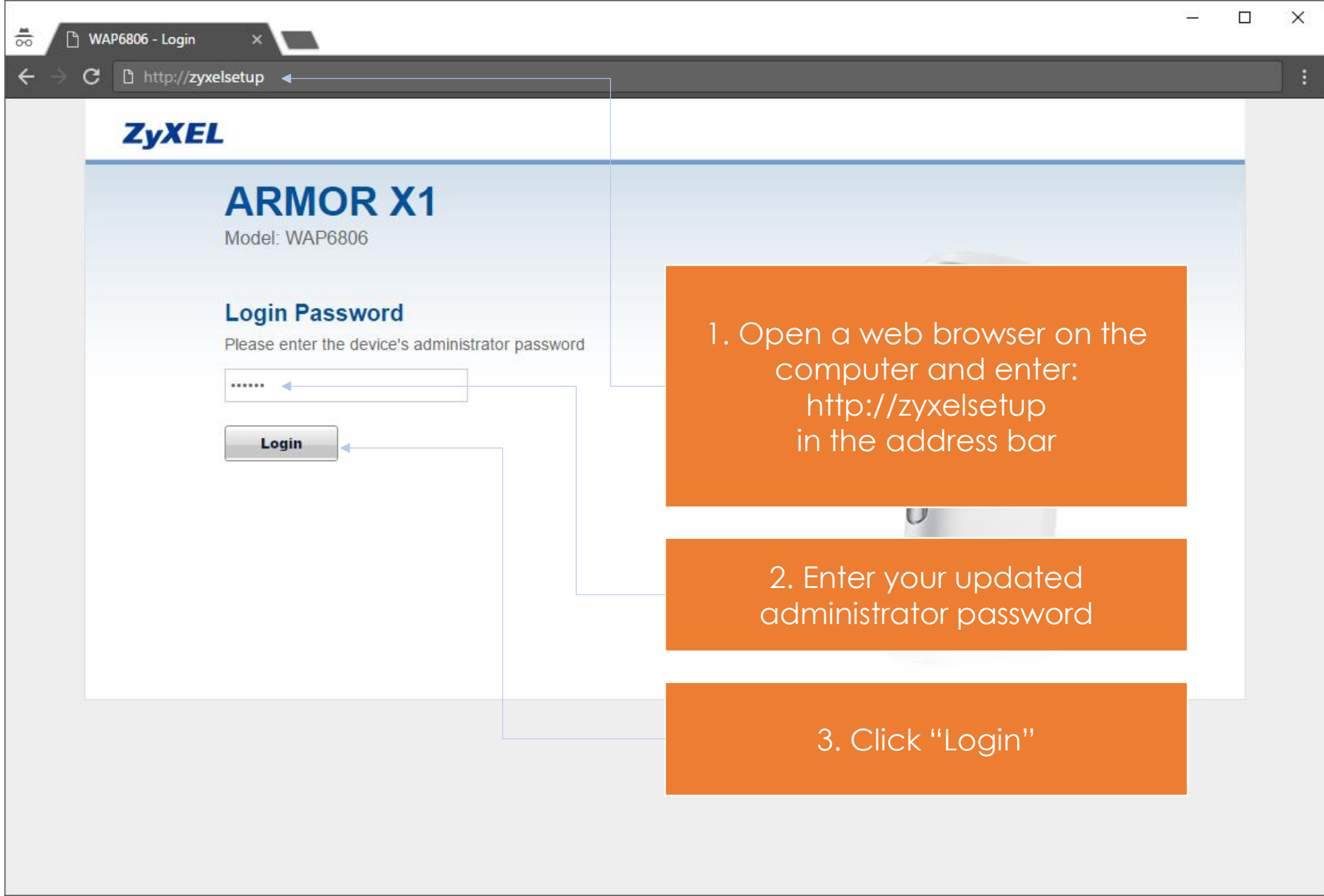
Try:

- Checking the connection
- [Checking the proxy and the firewall](#)
- [Running Windows Network Diagnostics](#)

ERR_CONNECTION_RESET

Reload

If you see this, wait for 5 minutes,
then press 'Reload'
proceed to next step



1. Open a web browser on the computer and enter:
`http://zyxelsetup`
in the address bar

2. Enter your updated
administrator password

3. Click "Login"

zyxelsetup/ZyXEL/dashboard.cgi

EnglishWelcome: adminLogout | eaZy123HomeAbout

Status

System Information

Host Name:	WAP6806
System Mode:	Repeater Mode
Hardware Version:	A0B
Firmware Version:	V1.00(ABAL.4)C0
System Up Time:	0 day: 0 hour: 23 minutes
Current Date/Time:	2017-Mar-21/01:08:26

Ethernet Information

MAC Address:	58:8B:F3:B5:36:C0
IP Address:	192.168.87.21
Subnet Mask:	255.255.255.0
Encapsulation mode:	IP over Ethernet (IPoE)
Gateway:	192.168.87.1
DNS Server:	192.168.87.1
IP Alias:	192.168.1.2
Subnet Mask:	255.255.255.0

AP Connection Status - 2.4G

MAC Address:	N/A
SSID:	N/A
Channel:	N/A
Security:	N/A
Status:	Disconnected

Refresh Interval: NONERefresh

Click the Profile icon



MAINTENANCE

open all | close all



Maintenance



Maintenance > System > General

General

Time Setting

Password Setup

Old Password :

New Password :

Confirm New Password :

Confirm

Reset

Expand "Maintenance"

[open all](#) | [close all](#)

- System
- **Firmware Upgrade**
- Backup/Restore
- Reboot

☐ Maintenance > Firmware Upgrade > Firmware Upgrade

Firmware Upgrade

To upgrade the internal device firmware, browse to the location of the binary (.BIN) upgrade file and click Upgrade **Upgrade**. Upgrade files can be downloaded from website. If the upgrade file is compressed (.ZIP file), you must first extract the binary (.BIN) file. In some cases, you may need to reconfigure.

File Path:

Choose File No file chosen

Online Firmware Upgrade

[Check For Latest Firmware](#)

1. Click "Firmware Upgrade"

Upgrade

2. Click "Check For Latest Firmware"



ARMOR X1

English

Welcome: admin

[Logout](#)

[eaZy123](#)

[Home](#)

[About](#)



MAINTENANCE

open all | close all



Maintenance

- System
- **Firmware Upgrade**
- Backup/Restore
- Reboot



> Firmware Upgrade > Firmware Upgrade

Firmware Upgrade

Firmware Upgrade

To upgrade the internal device firmware, browse to the location of the binary (.BIN) upgrade file and click Upgrade **Upgrade**. Upgrade files can be downloaded from website. If the upgrade file is compressed (.ZIP file), you must first extract the binary (.BIN) file. In some cases, you may need to reconfigure.

File Path:

Choose File No file chosen

Online Firmware Upgrade

Check For Latest Firmware Now

Current Firmware Version: V1.00(ABAL.4)C0

The Newest Firmware Version: V1.00(ABAL.5)C0

Upgrade

WAP6806_V1.00(ABAL.5)C0_release_note.pdf

Read

Click "Upgrade" next to "The Newest Firmware Version"

Wait a few minutes



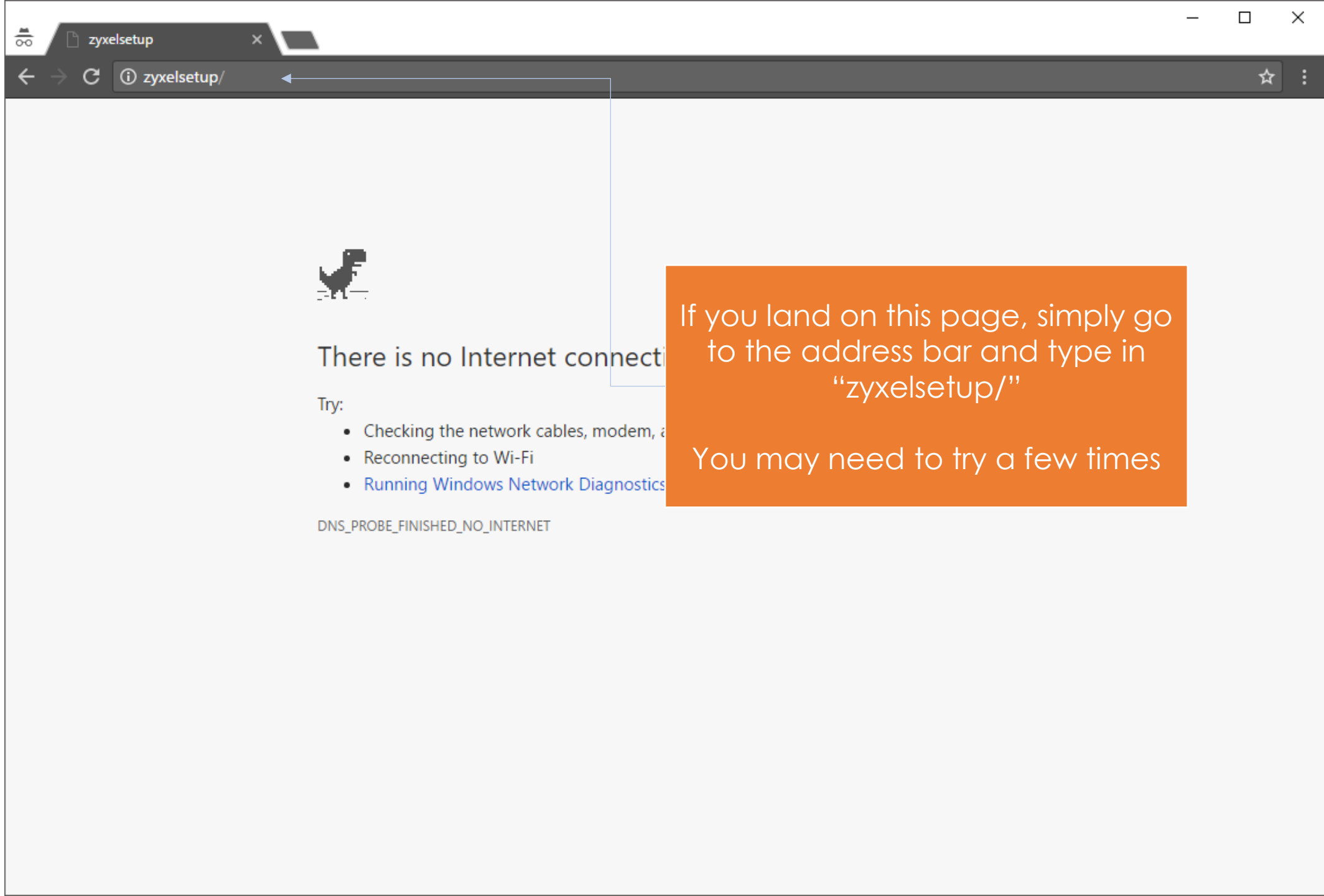
ARMOR X1 Is Restart Now

ARMOR X1 will now reboot. As there will be no indication of when the process is complete, please wait for two minutes before attempting to access the router again.



Restarting now, Please wait...

Wait for 2 minutes to restart



There is no Internet connection

Try:

- Checking the network cables, modem, and router
- Reconnecting to Wi-Fi
- [Running Windows Network Diagnostics](#)

DNS_PROBE_FINISHED_NO_INTERNET

If you land on this page, simply go
to the address bar and type in
“zyxelsetup/”

You may need to try a few times

**ZYXEL**

ARMOR X1

Model: WAP6806

Login Password

Please enter the device's administrator password

 Default: 1234**Login**

If you see this new logo, you have successfully upgraded your ARMOR X1 and completed your setup!



ZYXEL

Your Networking Ally