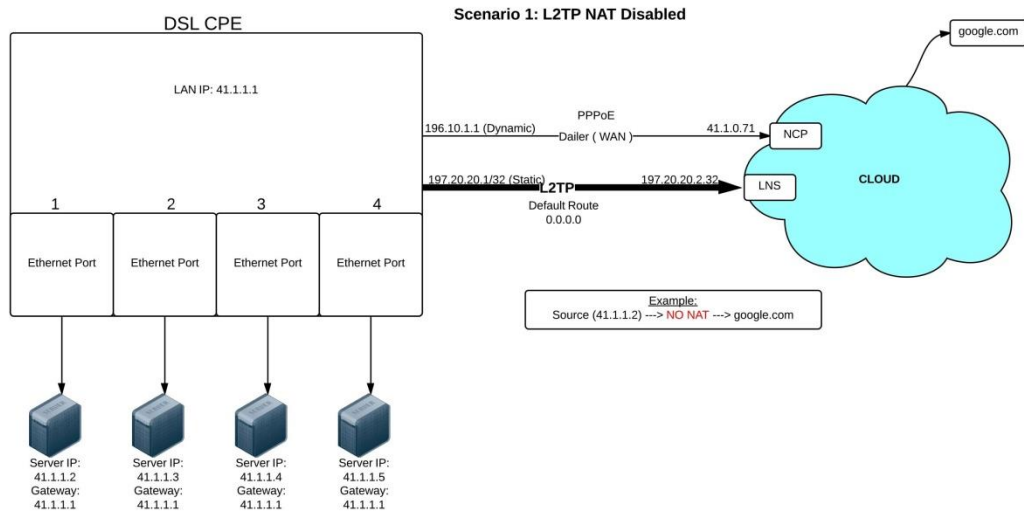


The logo for ZyXEL, featuring the word "ZyXEL" in a bold, dark blue, sans-serif font. The letters are slightly italicized. The background consists of several overlapping, semi-transparent light blue geometric shapes, including triangles and polygons, creating a modern, abstract design.

ZyXEL

L2TP Setup Guide (NAT Disabled)

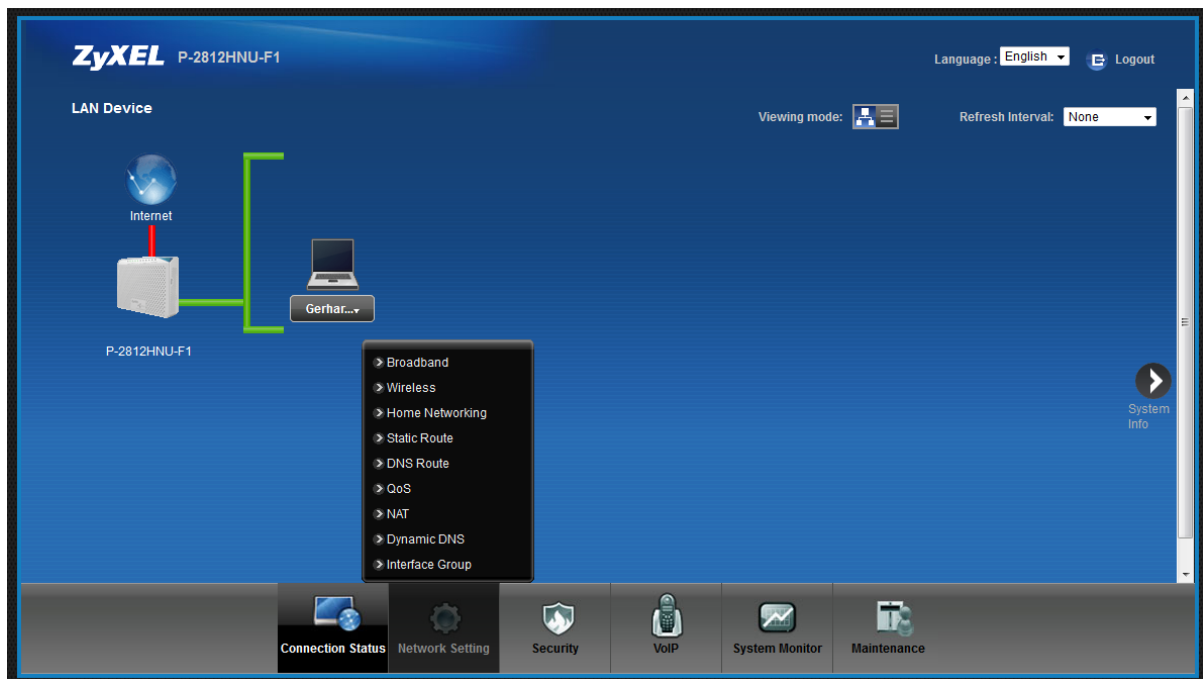


L2TP (NAT Disabled)

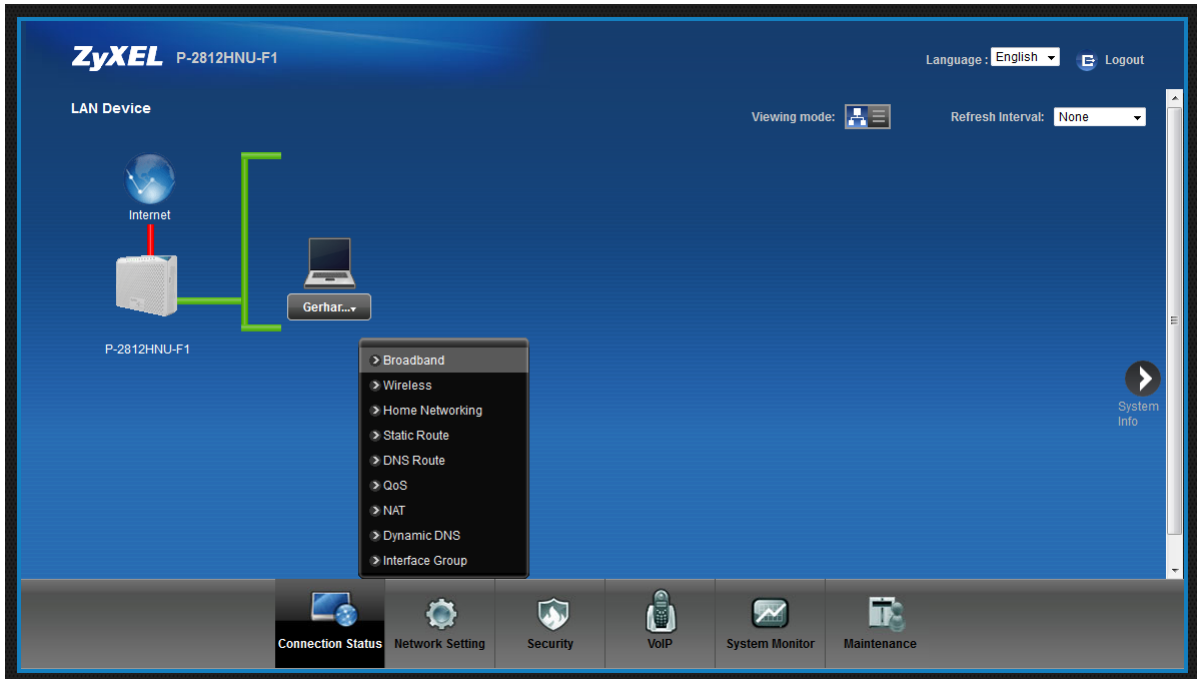
Scenario 1



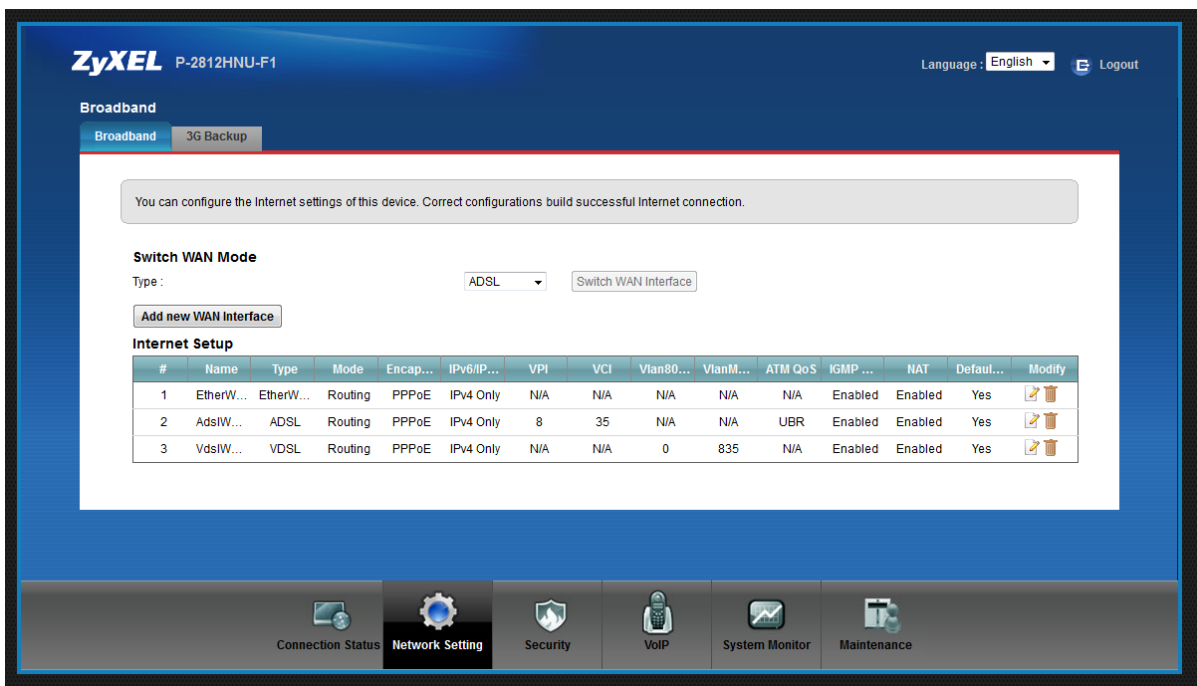
- Log into the GUI of the P-2812HNU-F1 (default LAN IP is 192.168.1.1)
- Default Username/Password: admin/1234



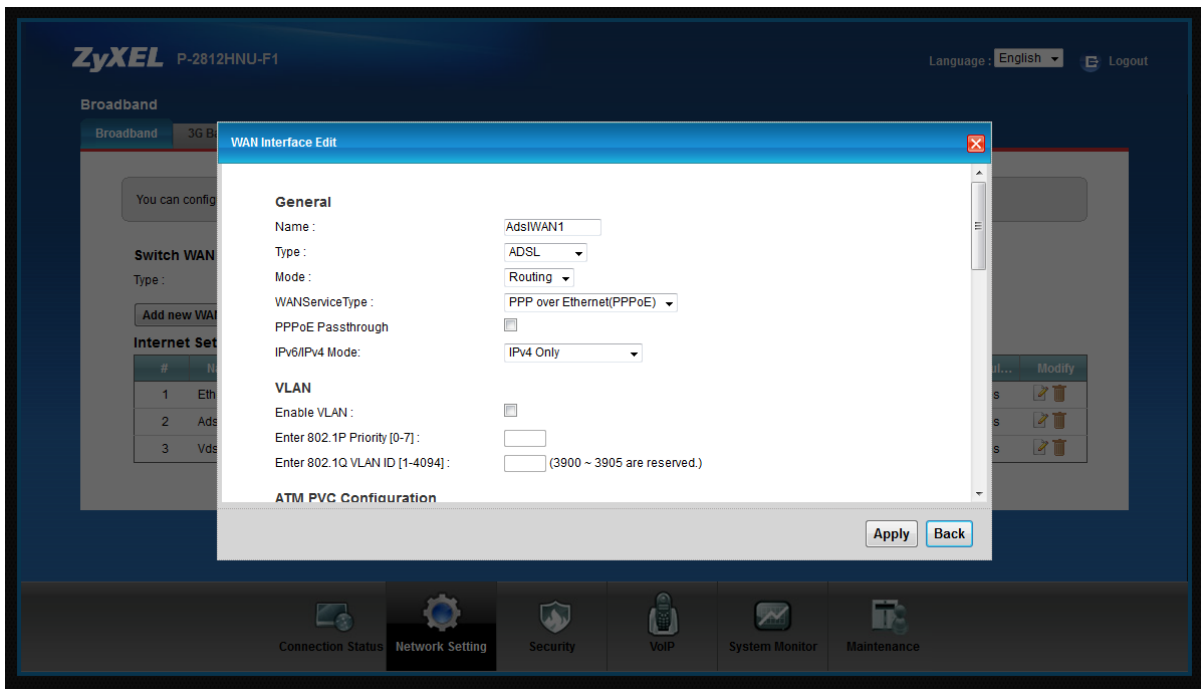
- Mouse over Network Setting tab in the GUI.



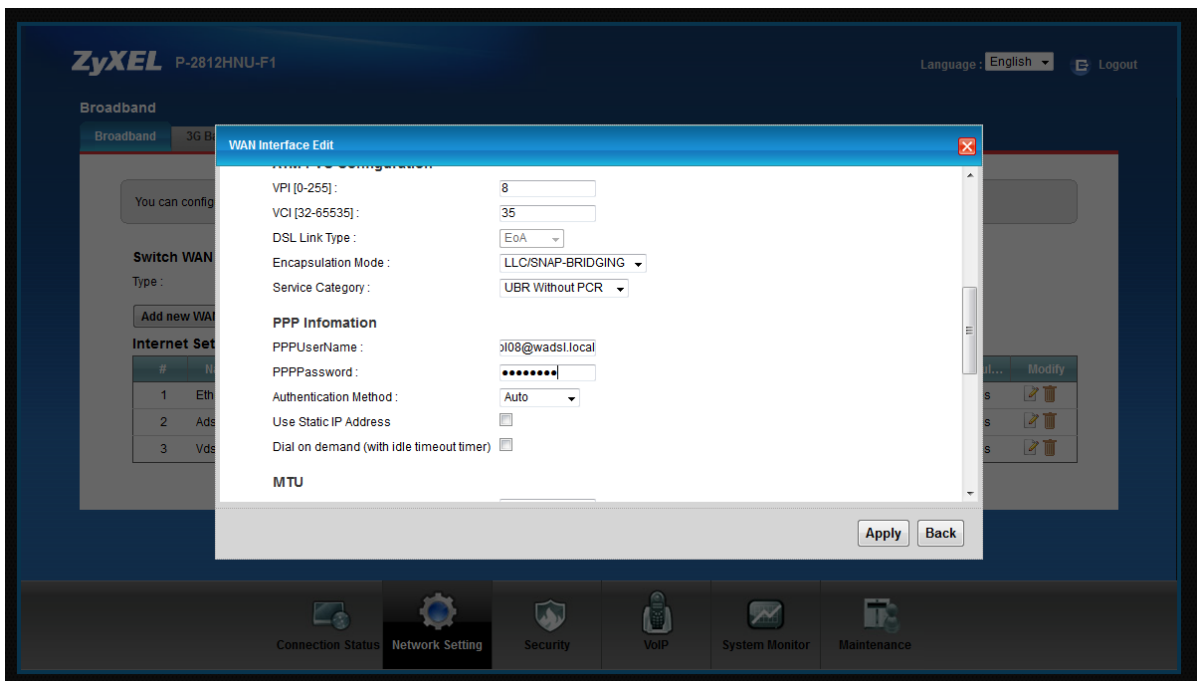
- Click on Broadband



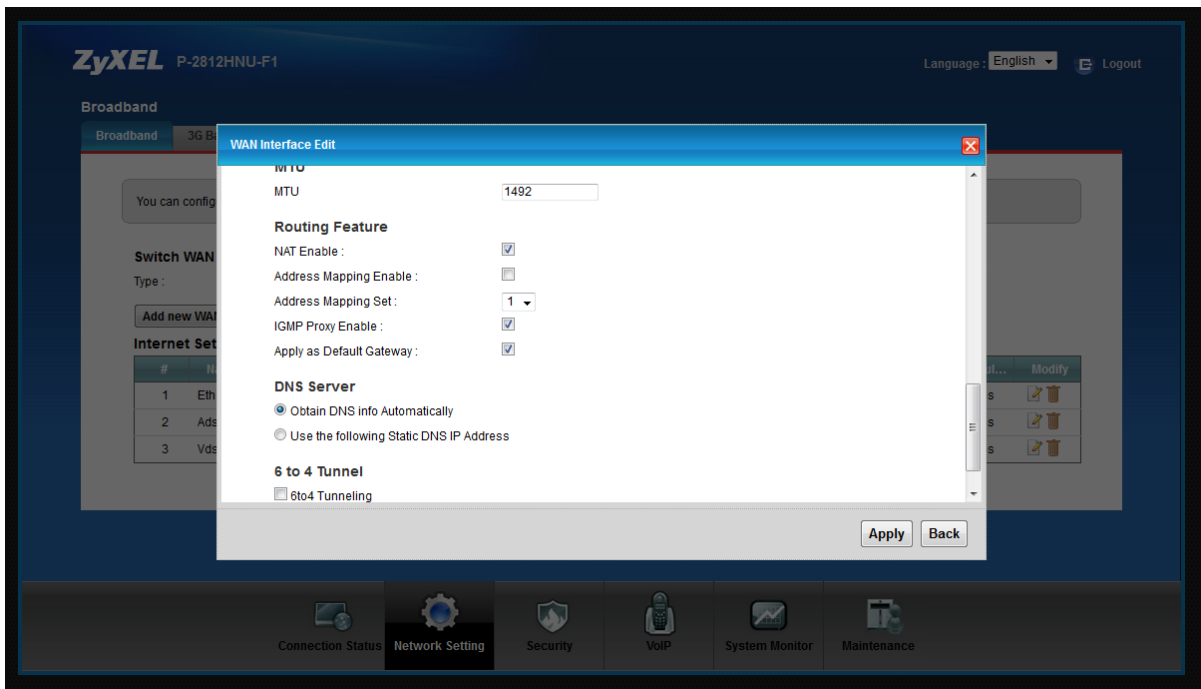
- On the Broadband page, click on edit AdslWAN interface (click on the paper icon on the right hand side under Modify).



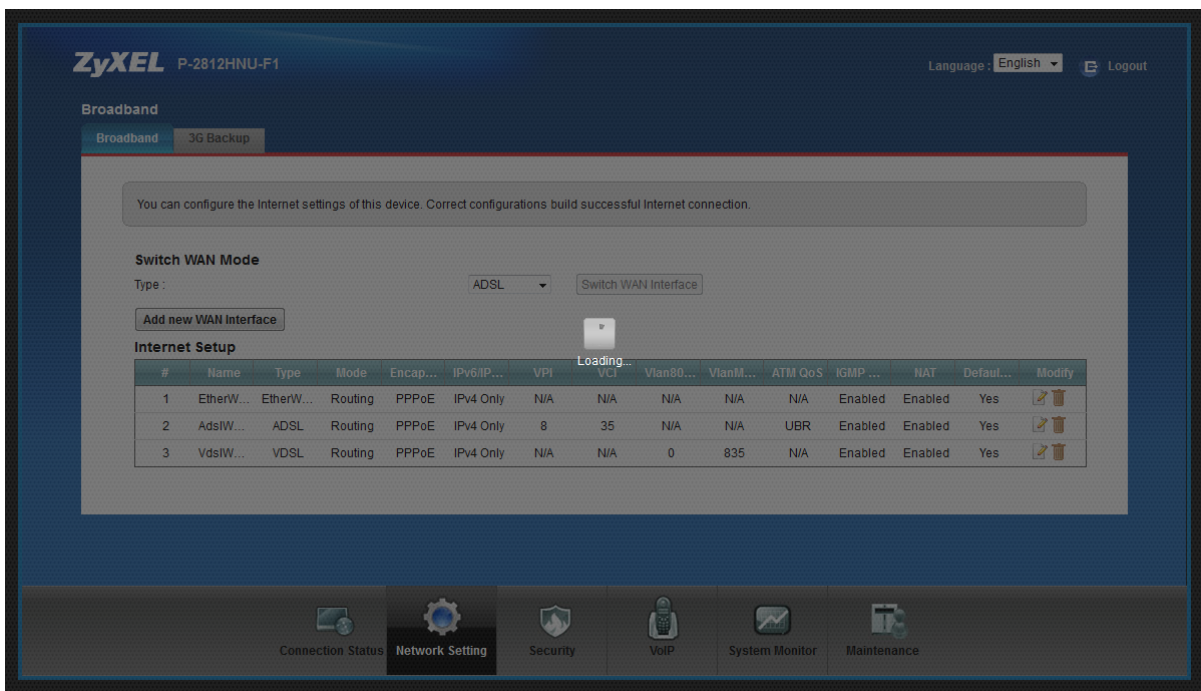
- On the edit page of the AdslWAN interface, scroll down to PPP Information



- On the PPP Information section, enter your PPP Username and PPP Password (PPPoE details that your ISP provided you with)



- Scroll down to the bottom of the page and click on Apply once PPPoE username and PPPoE password has been entered.



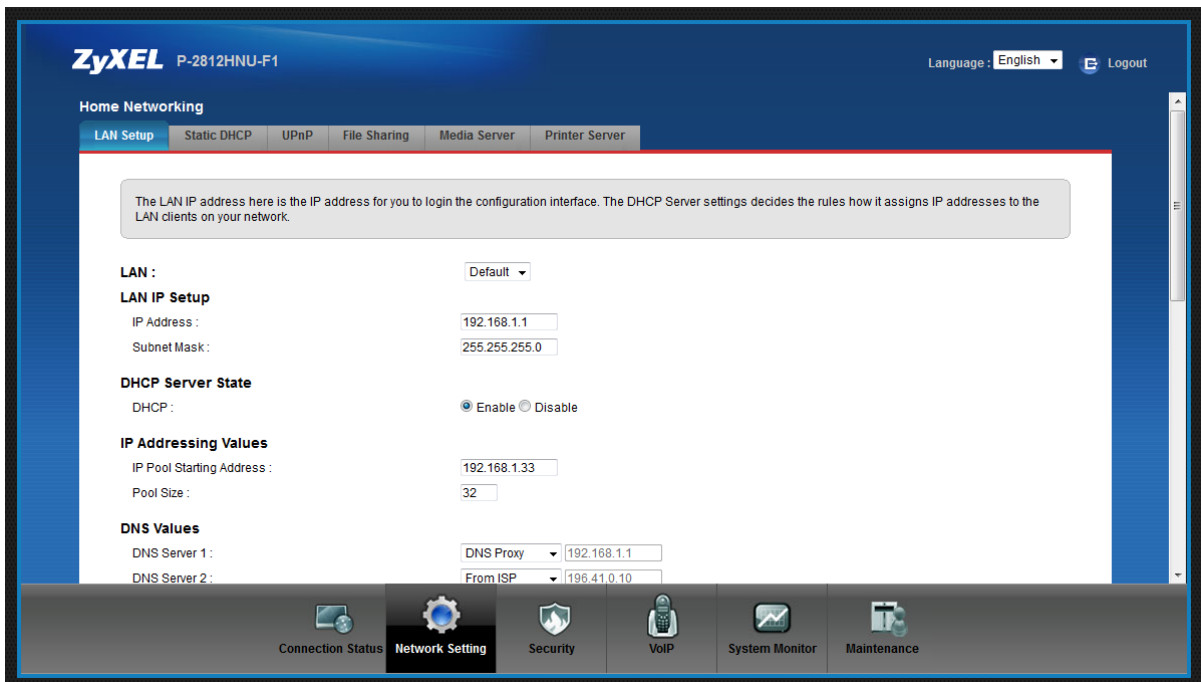
- P-2812HNU-F1 is busy applying the PPPoE details



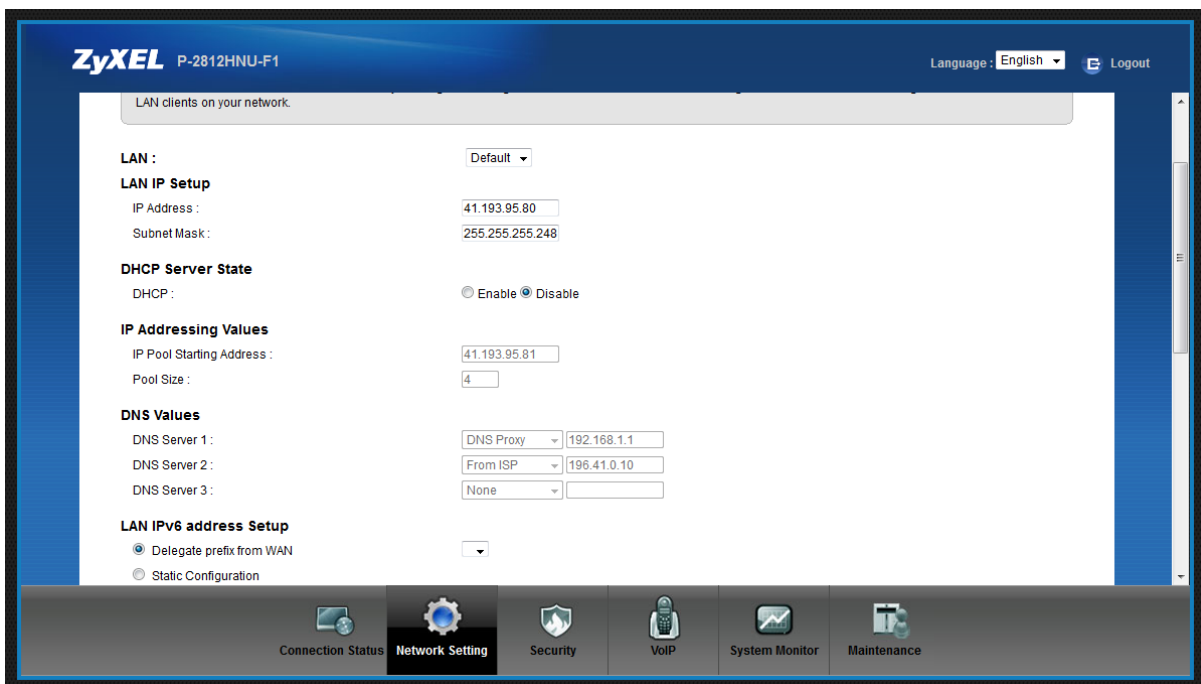
- After you have clicked on Apply at the AdslWAN interface edit page, move to the Connection Status tab to see if internet is available (if the PPPoE details was entered correctly and Apply was clicked, the internet line will be green, same as above screen shot). Internet line will remain red if PPPoE details was incorrectly entered or if DSL connection is not available.



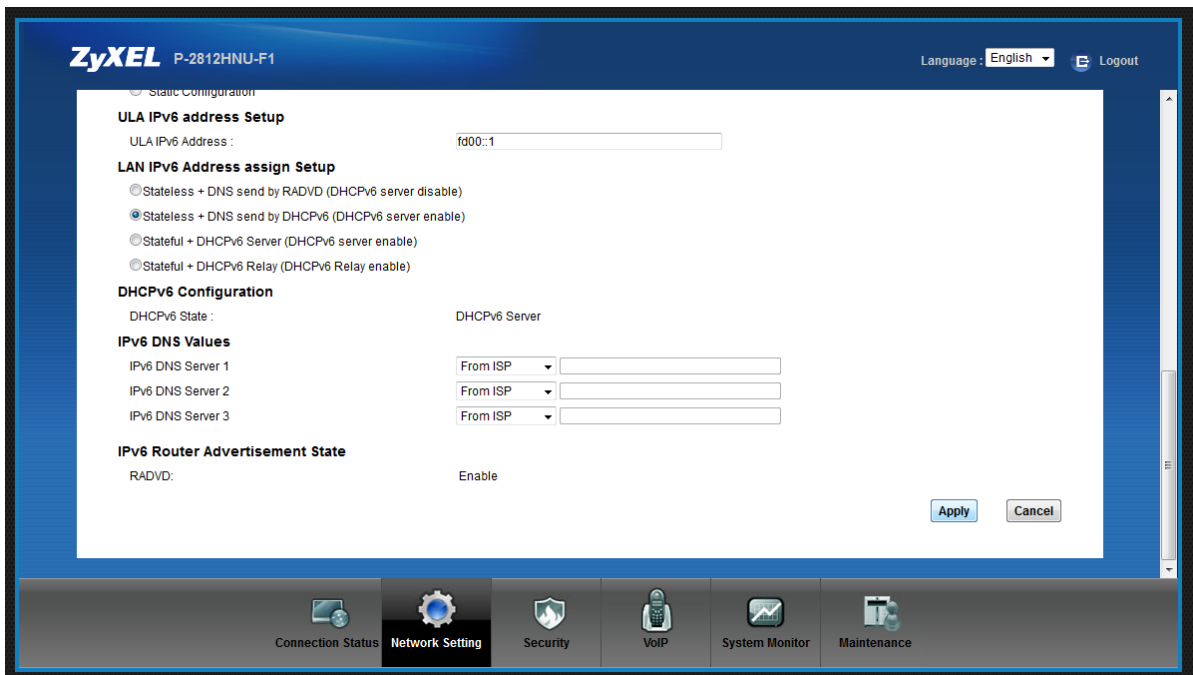
- Mouse over the Network Setting tab
- Click on Home Networking



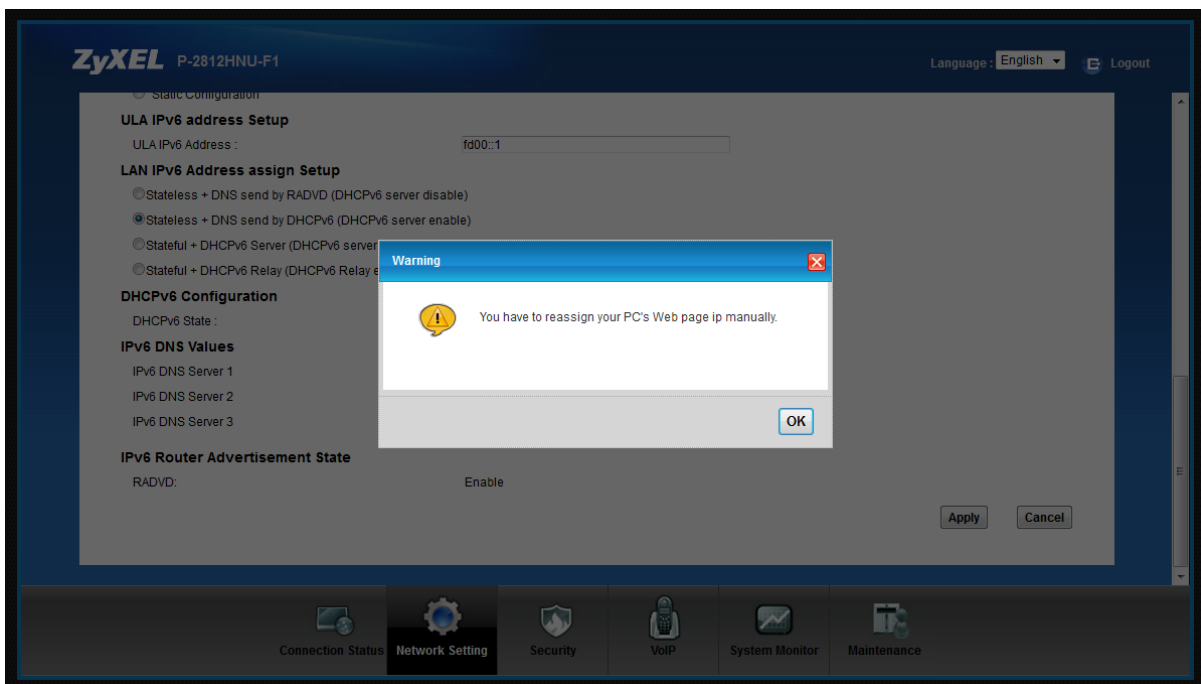
- Home Networking page



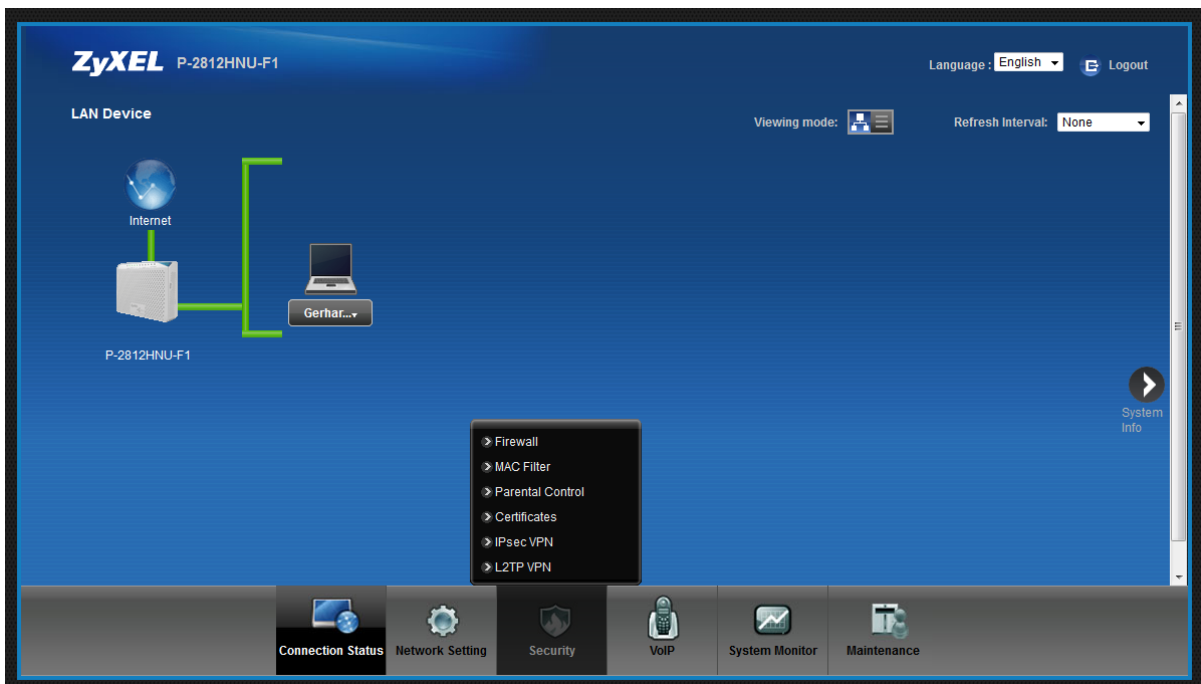
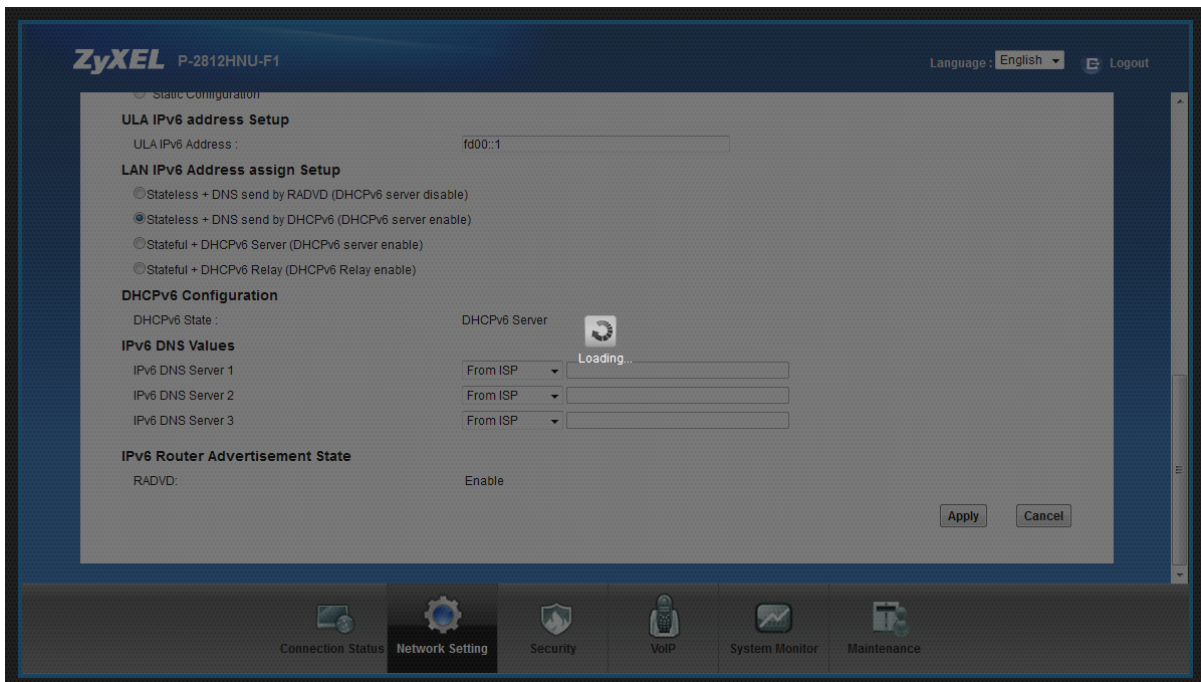
- Change the IP Address to one of the Global pool IP Addresses received from your ISP
- Change the Subnet Mask to /29 or /30 ... (information that you received from your ISP)
- Disable DHCP (to Disable DHCP adjust the DHCP pool and the pool size)



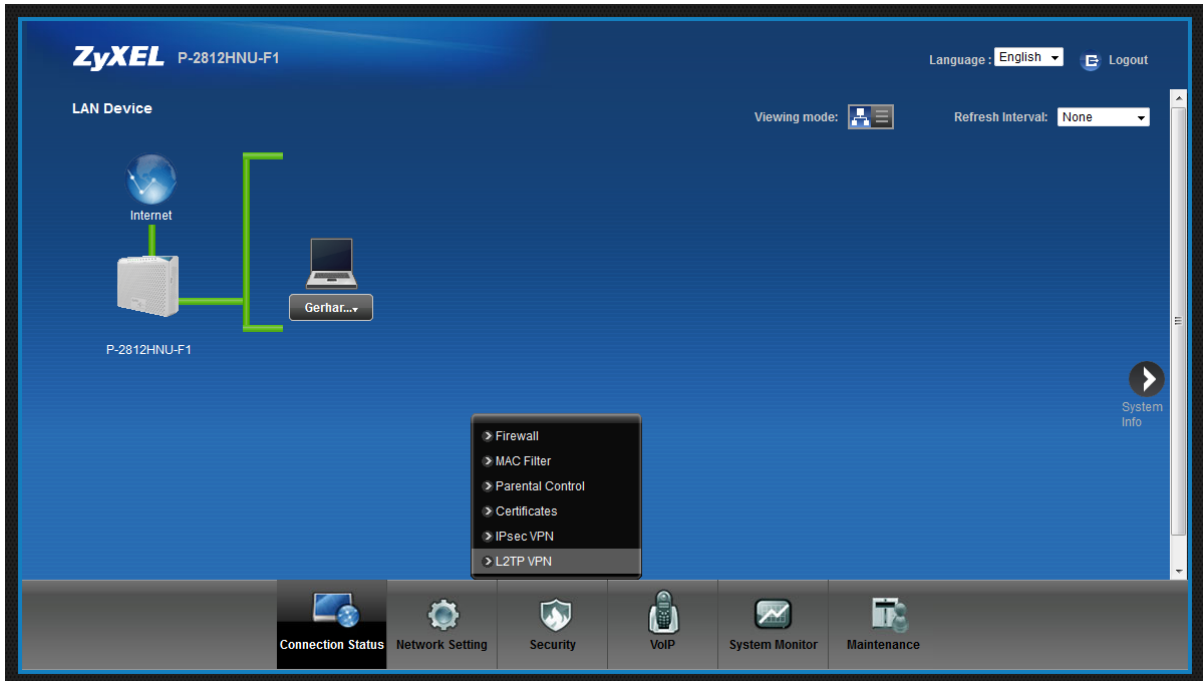
- Scroll down and click on Apply



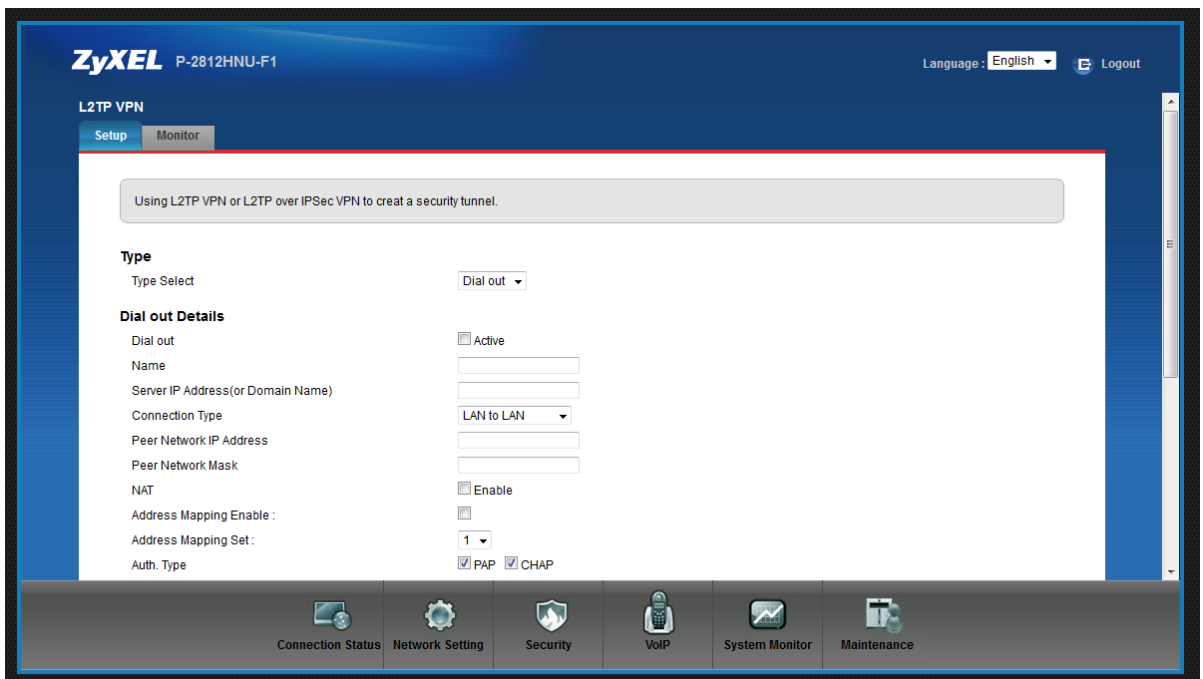
- Once you have clicked on Apply, you need to give your PC a static IP Address.



- Log into the GUI of the P-2812HNU-F1 with the new LAN IP
- Mouse over the Security tab



- Click on L2TP VPN



- This is the page where you can setup the L2TP VPN

ZyXEL P-2812HNU-F1 Language: English Logout

Type Select Dial out

Dial out Details

Dial out Active

Name VOX-VPN-TUN

Server IP Address(or Domain Name) 196.41.6.5

Connection Type LAN to LAN

Peer Network IP Address 0.0.0.0

Peer Network Mask 0.0.0.0

NAT Enable

Address Mapping Enable:

Address Mapping Set: 1

Auth. Type PAP CHAP

User Name 806167@l2tpvoxsdsl.co.za

Password *****

Tunnel Authentication Enable

Secret

Remote Host Name(Optional)

Local Host Name(Optional)

L2TP over IPsec

Connection Status Network Setting Security VoIP System Monitor Maintenance

- Typical setup for the L2TP-NAT disabled solution (L2TP setup as default route).
- Connection Type (Always use LAN-LAN)
- Disable NAT on the L2TP VPN interface

ZyXEL P-2812HNU-F1 Language: English Logout

Server IP Address(or Domain Name) 196.41.6.5

Connection Type LAN to LAN

Peer Network IP Address 0.0.0.0

Peer Network Mask 0.0.0.0

NAT Enable

Address Mapping Enable:

Address Mapping Set: 1

Auth. Type PAP CHAP

User Name 806167@l2tpvoxsdsl.co.za

Password *****

Tunnel Authentication Enable

Secret

Remote Host Name(Optional)

Local Host Name(Optional)

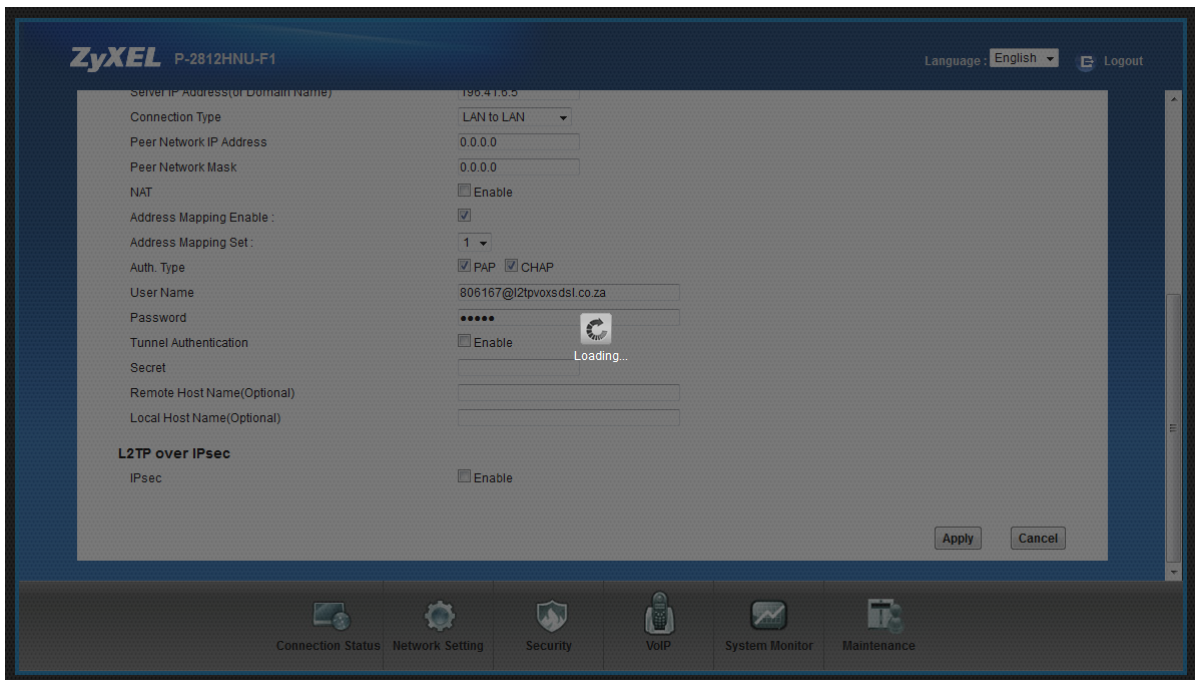
L2TP over IPsec

IPsec Enable

Apply Cancel

Connection Status Network Setting Security VoIP System Monitor Maintenance

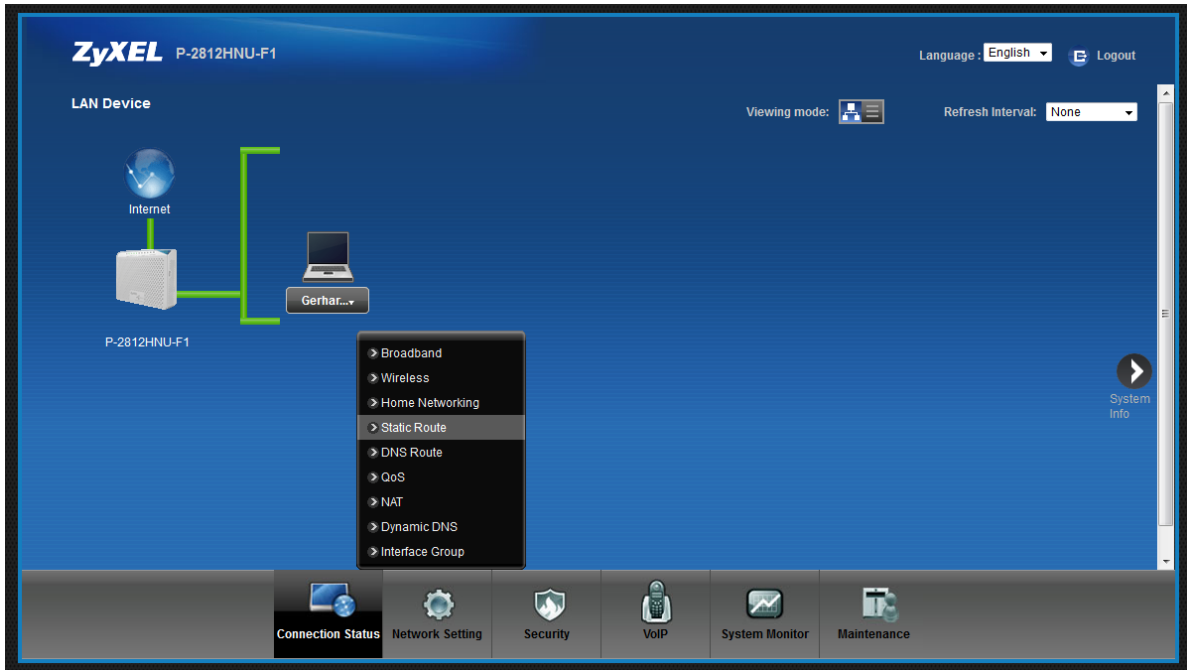
- Once details has been entered, click on Apply



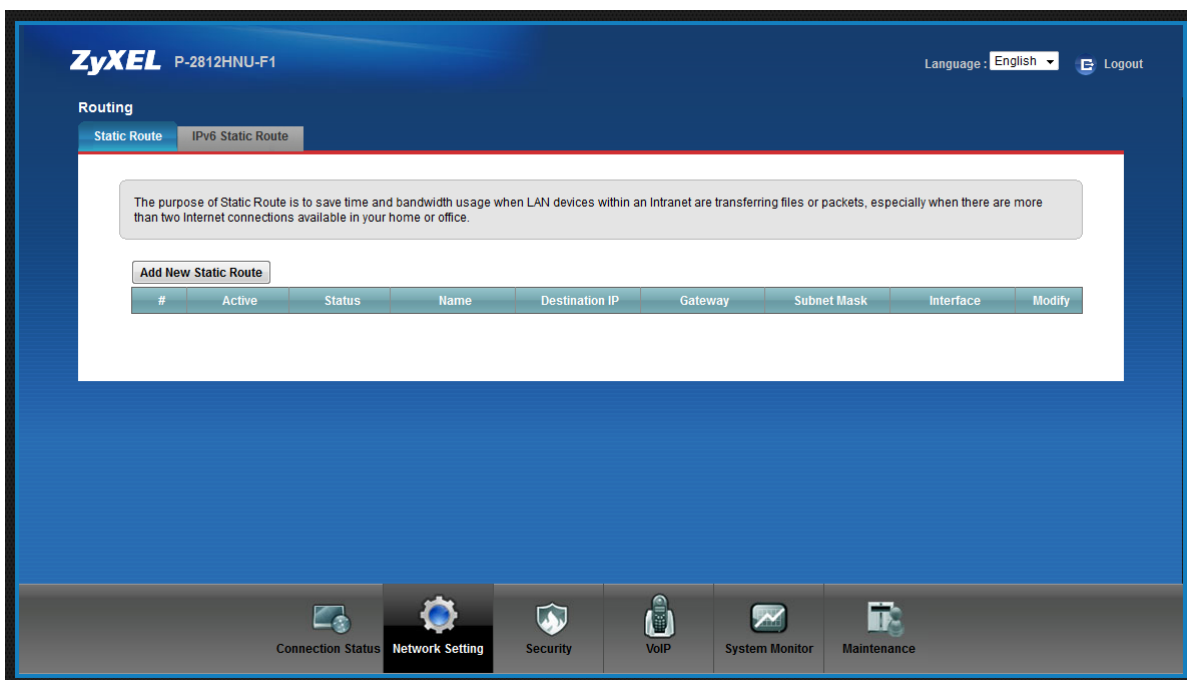
- After settings has been applied, move to the Connection Status tab



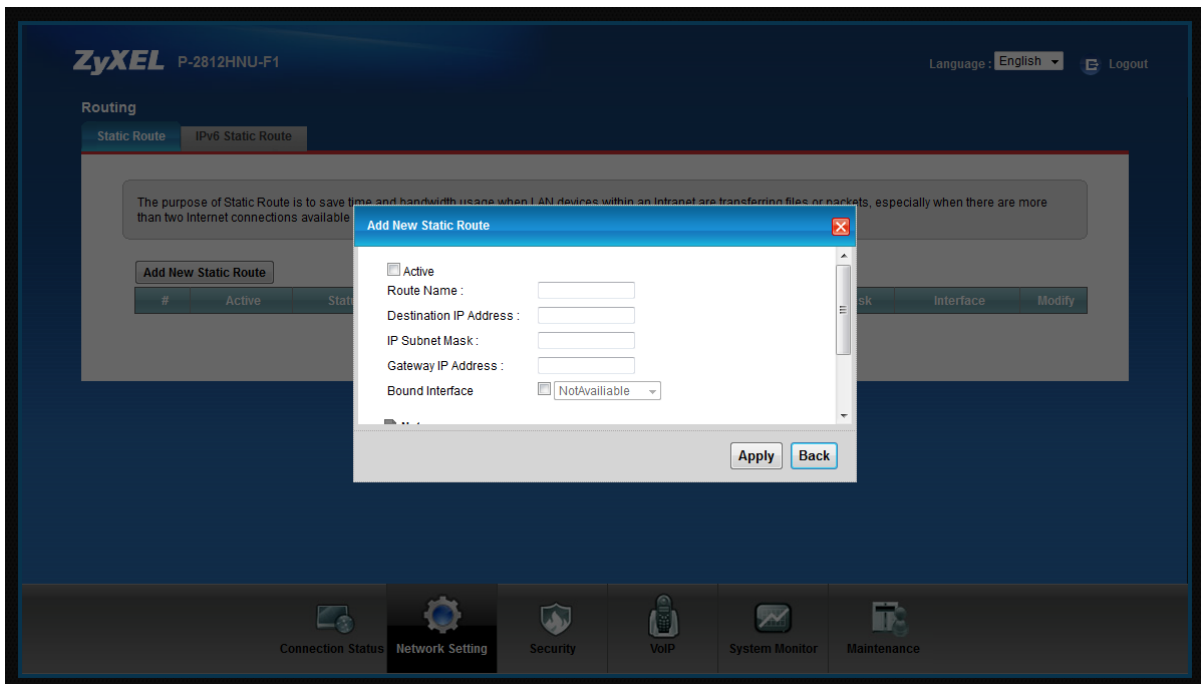
- Mouse over the Network Setting tab



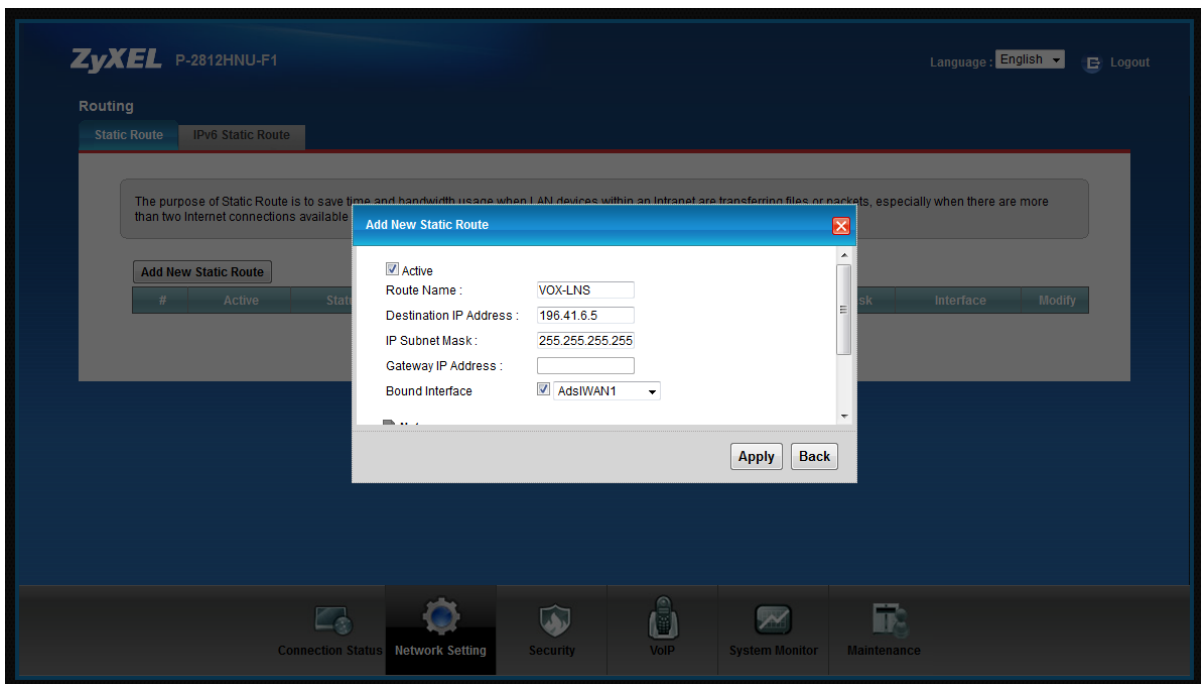
- Click on Static Route



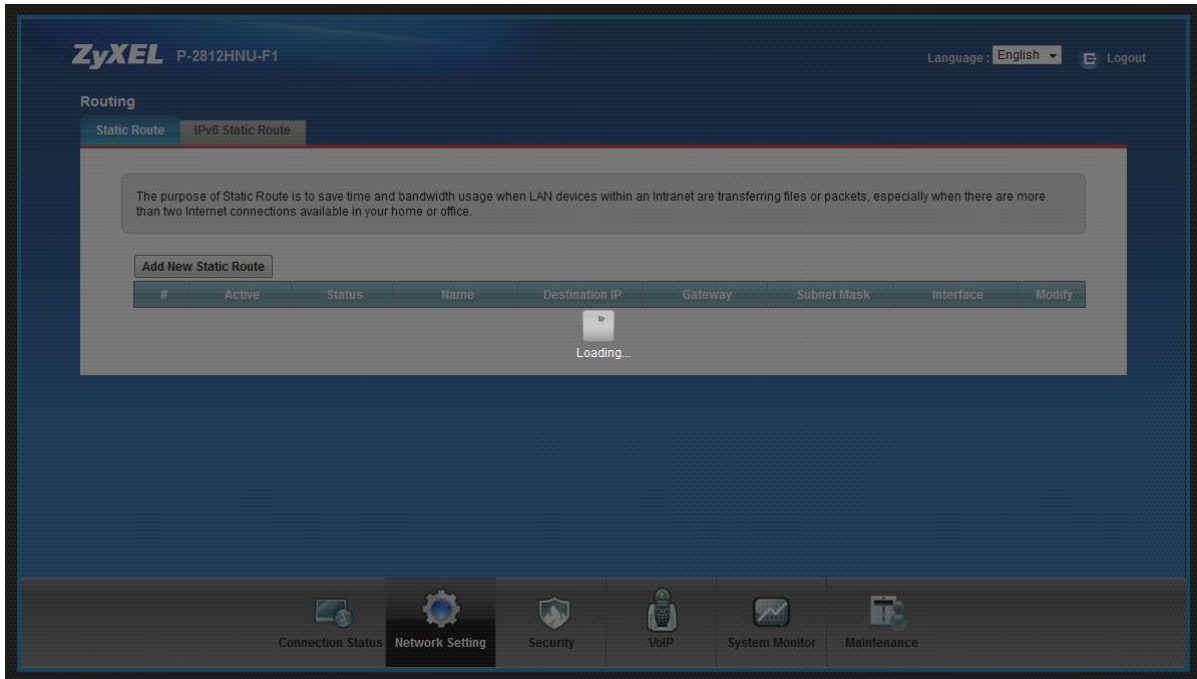
- Click on 'Add New Static Route'



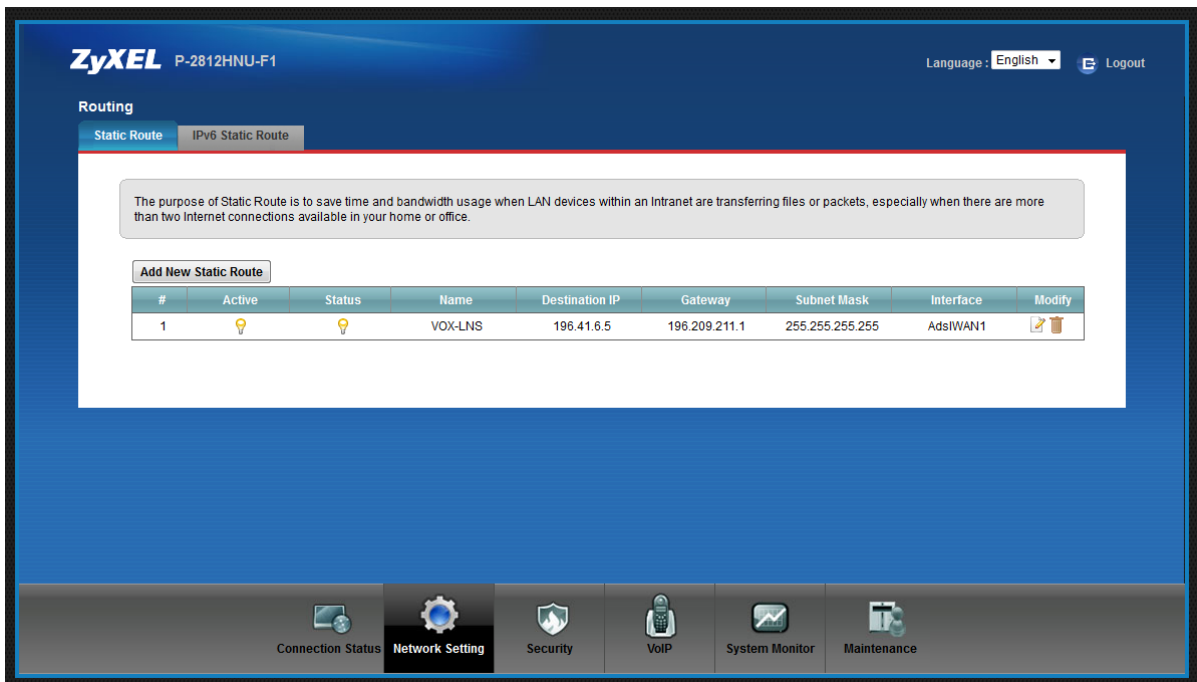
- Add New Static Route-page



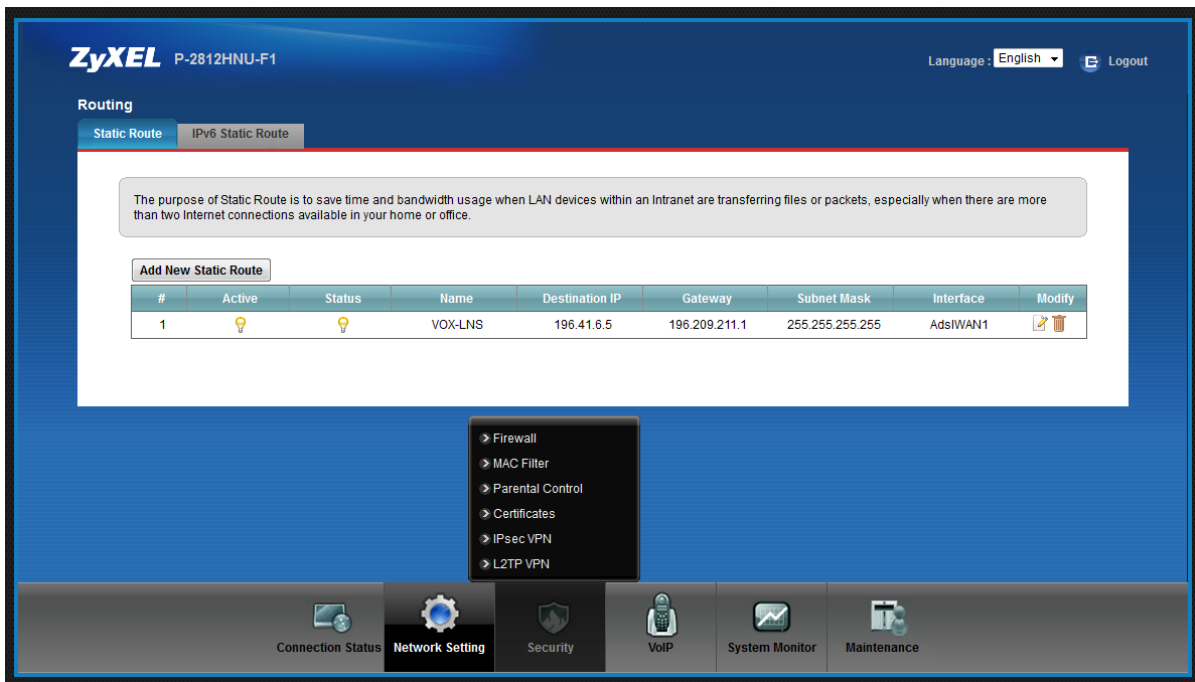
- Bound the LNS IP address (information received from ISP) over the AdslWAN1 interface
- This step is shown in the above screenshot
- After details has been entered, click on Apply



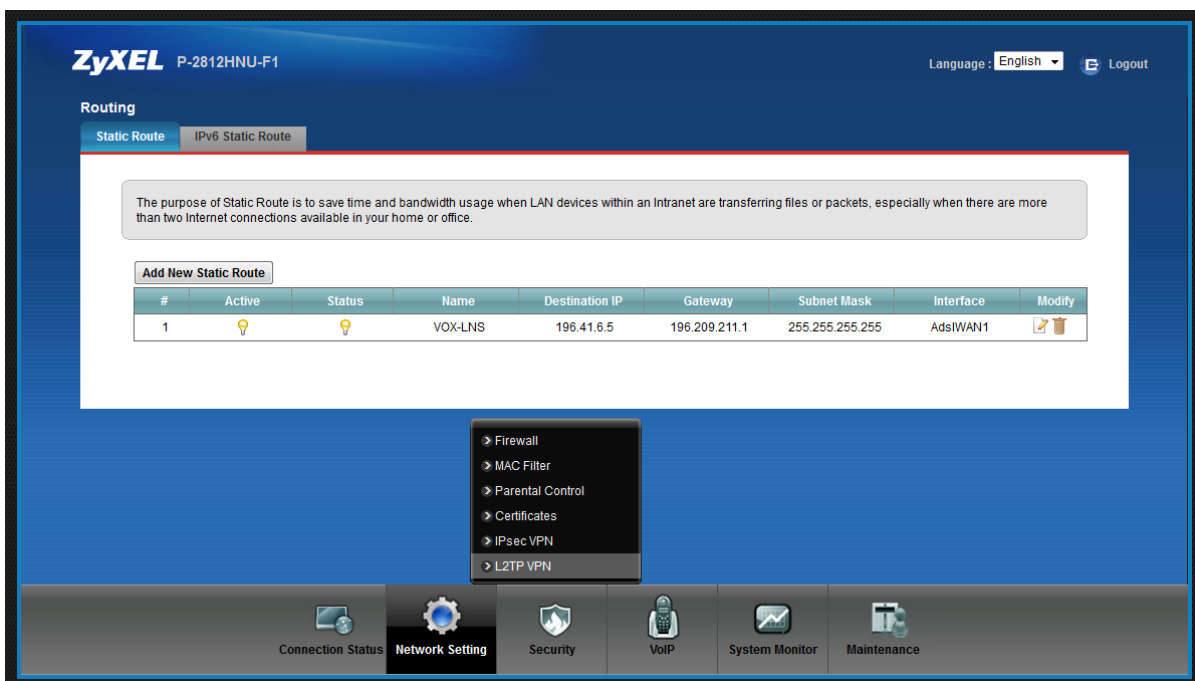
- Rule is being created



- Rule has been created



- Mouse over the Security tab



- Click on L2TP VPN

ZyXEL P-2812HNU-F1 Language: English Logout

L2TP VPN

Setup **Monitor**

Monitor Page will show the active L2TP connection status

Type	Active	Connection Type	Tunnel Connected	Call Connected	Local IP Address	Remote IP Address
Dial in		Remote Access		None	None	None
Dial out		LAN to LAN		1	41.193.135.29	41.193.135.30

[Refresh](#)

Connection Status Network Setting Security VoIP System Monitor Maintenance

- Move to the Monitor tab
- Once at the Monitor tab, you will be able to see if the L2TP tunnel is up or down
- L2TP VPN tunnel is up as shown in the above screenshot