



## Overview

### Customer Name

Graphisoft Park

### Customer Industry

Real estate

### Challenge

To create a wireless network for free and easy-to-use Internet access possibility users can enjoy outside the office walls.

### Solution

- 2 pcs EXT-109
- 1 pc NWA-3550
- 2 pcs LMR-400
- 14 pcs SFP-SX-D
- 8 pcs NWA-3160 wireless dual band controller/AP
- 3 pcs ES-2108-G
- 1 pc MGS-3712F
- 6 pcs ES-2108PWR
- 1 pc N4100
- 1 pc ZyWALL 1050
- 1 pc E-iCard, 1 year Content Filter for ZyWALL 1050

### Benefits

A reliable wireless Internet connection was deployed in the communal areas of the office park and tenants and visitors are free to use it.

GRAPHISOFT PARK



## Success Story

## Graphisoft Park - Nonstop Wireless Access in the common areas of the exclusive office park

### Graphisoft Park

Graphisoft Park is located directly next to the Danube, the beautiful river of the capital – in 18 acres of green area. The designers and constructors of the office park were especially attentive to preserve the nature and the green areas. Besides several smaller and middle sized companies, also Microsoft's and the European software giant, SAP's international development's base is leased here.

Biotechnological research laboratories can be founded in the Park as well; its first laboratory was built for a Hungarian company named Comgenex, later acquired by the American AMRI. In 2007 there was built a world-class research laboratory for the French pharmaceutical company, Servier. In Graphisoft Park currently operates 60 companies with more than 2000 employees.

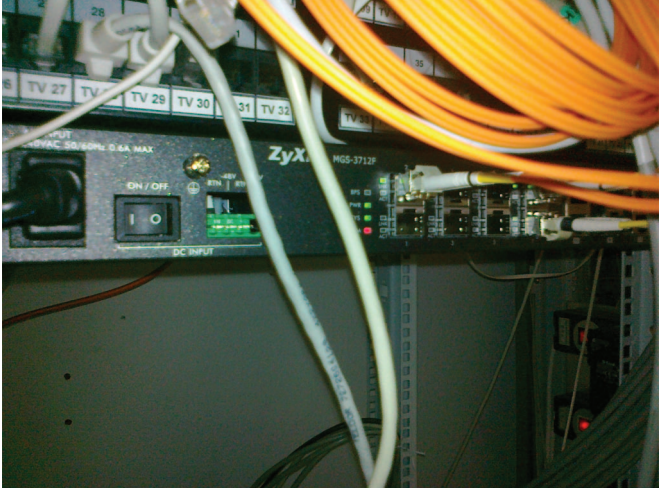
### Challenge

The challenge was to provide fast and reliable Internet access for the workers and visitors of Graphisoft Park all the time at as many places as possible for free of charge. All the buildings were selected for deployment, where conferences, discussions can take place and where people can just sit down for a while to relax and surf on the Internet. We planned the network system with focusing on these areas. In the Park there are optical fibers among several buildings and we could also benefit from these. Finally there were placed 8 ports PoE switches in the building B, C, K and N. The switches are connected through a MSG3712F Metro Gigabit Ethernet Switch. Bearing in mind the survey made by Equicom Ltd. we placed the NWA-3160 Wireless Dual Band Access Points. The APs operate in control mode, so the management - which is in a separated VLAN - is maintained with one single IP-address.

We aimed to further enhance the utilization of the Park's grassy parts; we covered the area of the little lake in the middle, the bar and the restaurant as well. So we chose a dual band outdoor device for the top of the M building, from where the whole area mentioned above can be stewed. The restaurant is located in one of the most frequented parts of the Graphisoft Park; we pursued to ensure the Internet access here too. We established the connection on two floors, and place an AP on the lower floor where the conference rooms are. The center of the system is in building C, as located the hotspot gateway and the firewall ensuring the content filter is located here, as well as the SNMP-based ENC server supervising the whole system operation. This device immediately generates an alarm if any problem occurs in the network and continuously creates setting back-ups.



**Installation**







## Technology and Product used

### Solution

- 2 pcs EXT-109
- 1 pc NWA-3550
- 2 pcs LMR-400
- 14 pcs SFP-SX-D
- 8 pcs NWA-3160 wireless dual band controller/AP
- 3 pcs ES-2108-G
- 1 pc MGS-3712F
- 6 pcs ES-2108PWR
- 1 pc N4100
- 1 pc ZyWALL USG
- 1 pc E-iCard, 1 year Content Filter for ZyWALL 1050

### ES 2108PWR managed layer 2 switch

- 3.6 Gbps Non-blocking Switch Fabric
- 802.1x for Access Authentication
- 4 IEEE 802.1p Hardware Priority Queues
- IGMP Snooping v1, v2, v3
- Intrusion Lock, MAC Freeze, MAC Filtering & Static MAC Forwarding
- IEEE 802.3af Power over Ethernet
- Easy Web GUI for Intelligent PoE Power Management
- ZyXEL iStacking™ Technology



### NWA-3160

- 3-in-1 hybrid AP including AP controller mode, managed AP mode and stand-alone AP mode
- Centralized management for up to 24 WLAN Access Points
- Built with LSOH (Low Smoke Zero Halogen) material for plenum rating UL 2043 support
- Radius server
- Back-up Redundancy Supported to Provide Reliable Connection Service
- Secured Tunnels for Communication between Controller and Managed AP to Prevent Leaking of Configurations
- Enterprise-class Access Point Functionalities with Comprehensive Configuration Interfaces



## ZyWALL USG

### Unified Security Gateway

- All-new platform: "3rd" generation ZyWALL
- New generation UTM solution
- Robust hybrid VPN (IPSec and SSL)
- Application Firewall
- Web security (Security Web access): ZyXEL safe browsing
- Non-stop Internet access with multiple WAN and 3G backups
- ICSA firewall, IPSec certification
- Comprehensive report system
- Best-of-breed security solution
- Free Anti-spam service
- ZyXEL Security Distribution Network (ZSDN)



## N4100 Wireless N Hotspot Gateway

- Easy Web GUI for Power Management
- "Zero Configuration" IP plug and play
- Web-based user authentication, account monitoring, billing profiles
- High performance standards based solution: IEEE 802.11b/g/n support
- RADIUS Client, walled garden, advertising URL links and forwarding to portal
- User activities logged with session trace for auditing
- Providing Internet connectivity from 1 to 100 users

### About ZyXEL Communications

ZyXEL Communications Corp., founded in 1989 and headquartered in Taiwan, is the leading provider of complete broadband access solutions. As one of the early modem manufacturers, ZyXEL has undergone many transformations in the fast-paced networking industry. Today, ZyXEL is one of the few companies in the world capable of offering complete networking solutions of Telco, SME/Enterprise, and Digital Home for a wide range of deployment scenarios. Telco solutions include wired and wireless access network equipments, networking customer premises equipments, and Carrier Switches. SME and Enterprise solutions include Unified Security Gateway, LAN Switches, WLAN, and IP telephony. Digital Home solutions include network connectivity devices and multimedia solutions.

Copyright© 2011 ZyXEL Communications Corp. All rights reserved. ZyXEL, ZyXEL logo are registered trademarks of ZyXEL Communications Corp. All other brands, product names, or trademarks mentioned are the property of their respective owners. All specifications are subject to change without notice.